



# Monitoring your Network with Linux

WAVV 2005  
Richard Smrcina  
VM Assist, Inc.  
May 23, 2005



# Agenda

- Why monitor the network?
- Hobbit Network Monitor
- Hobbit concepts
- Installing and configuring Hobbit
- Extending Hobbit
- Hobbit operations



# Why monitor the network?

- Monitoring packages available for our systems
  - CICS, VSE, VM, Linux
  - Designed to monitor internals (tasks, jobs)
- Networks are getting more complex
- Systems are very interconnected
- We rely much more on varying types of systems



# Why monitor the network?

- Many machines perform 'business critical' functions
- Network administrators need to know when these systems are down
  - Or running degraded
- Notification of administrators off shift



# Hobbit Network Monitor



- Network availability monitor
- Web based display
- Uses colored icons and backgrounds
- Can perform any number of tests on any number of hosts
- Reports test results as a state
  - Up, down, on, off, red, green
- Marginal state used for impending trouble
  - yellow

# Hobbit Network Monitor



- Network tests run every 5 minutes
- The web page updates are done every minute
- If a test fails, it is re-tested every minute for 30 minutes
  - Reduces the need to change the test time

# Hobbit History



- Originally called 'bb-gen toolkit'
- Offered as an enhancement to Big Brother (<http://bb4.com>)
- Big Brother runs on various Unix systems
  - Implemented almost entirely as shell scripts
  - Easy to write and fairly universal, but not the best performance
  - Not an open source license
  - Development focused on commercial product
- bb-gen reimplemented the core of bb in C

# Hobbit History



- Development of the 'free' version of bb stagnated
- Henrik Stoerner evolved bb-gen into a stand-alone package
- Hobbit 4.0 was released on Mar 31, 2005
- Very active development
  - 4.0.3 is current



# Hobbit features

- Developed to monitor thousands of hosts
  - Handles big or small networks with ease
- Text file configuration
  - Web based configuration is planned
- Notification feature
  - Email (including cell phone), SMS
- Extensible through external scripts or clients



# Hobbit features

- Networked applications can be monitored
  - Connections are mimicked and typical responses watched
- Common protocols are available
  - FTP, Telnet, HTTP, DNS, LDAP, SMTP, etc
  - SSL testing of any protocols
- Testing of multiple servers can be combined into a single report



# Hobbit features

- “Green is good, Red is bad”
  - Simple web based front end
- Hosts can be grouped together
  - Based on logical or physical relationships
  - Groups can be in separate sections, web pages or both
- Tests for certain hosts can be on a separate page specifically suited to a NOC.



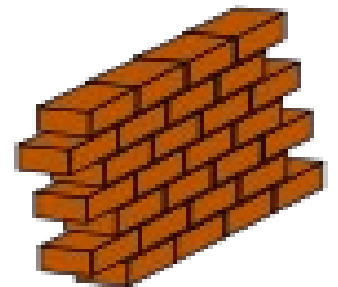
# Hobbit features

- In addition to HTML...
  - PDAs can be used via WAP/WML
  - RSS Feeds can be set up
  - XML format is also available
- Integrated trend analysis via LARRD
  - Generates graphs
- Event history is available
  - Can be used for SLA reporting
- Hosts can be disabled for planned downtime



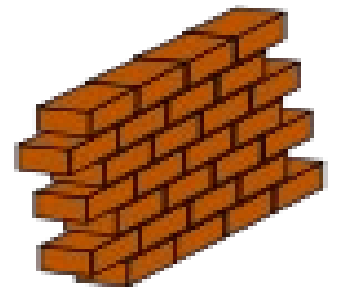
# Hobbit installation

- Fairly standard Linux application install
  - RPMs available for x86 architecture
  - Source RPMs available
  - Source also available via tarball
- Available from
  - <http://hobbitmon.sourceforge.net>
- If installing on x86, use the RPM
- For zSeries, install the source RPM
  - Or 'build your own'



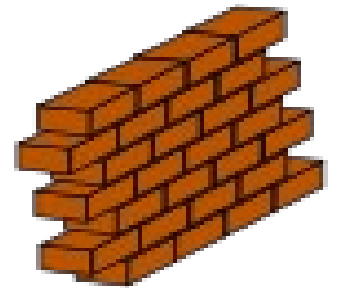
# Hobbit installation

- Prerequisites
  - A Unix-like operating system
  - Apache webserver
  - Working compiler and GNU make
  - PCRE, RRDTool, libpng and fping
    - Regular expression matching
    - Graphing
    - Fast connection test
  - For SSL support
    - Open SSL
  - For LDAP support
    - Open LDAP



# Hobbit installation

- Create a 'hobbit' user
- Use RPM or configure/make to build
- During the configuration, a number of questions are asked
  - The defaults are sensible
  - Only had to answer the location of fping and IP address prompts
- Use make to build the package
- As root 'make install'



# Apache configuration

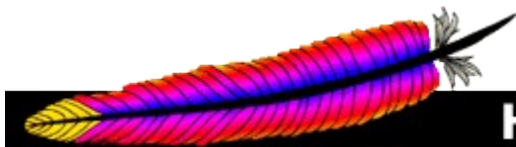
- An Apache configuration file is included with Hobbit
  - `~/server/etc/hobbit-apache.conf`
- Copy to `/etc/apache2/sysconfig.d`
- Edit `/etc/sysconfig/apache2`
  - Put the local hostname in `APACHE_SERVERNAME`
  - The path to the configuration file in `APACHE_CONF_INCLUDE_FILES`

```
APACHE_CONF_INCLUDE_FILES=/etc/apache2/sysconfig.d/hobbit-apache.conf
```



# Apache configuration

- Start Apache
  - `/etc/rc.d/apache2 start`
- Test access to webserver
- Set up Apache to start at boot
  - `chkconfig apache2 on`
  - YaST
- Use `htpasswd` to create users for access secured Hobbit administration functions



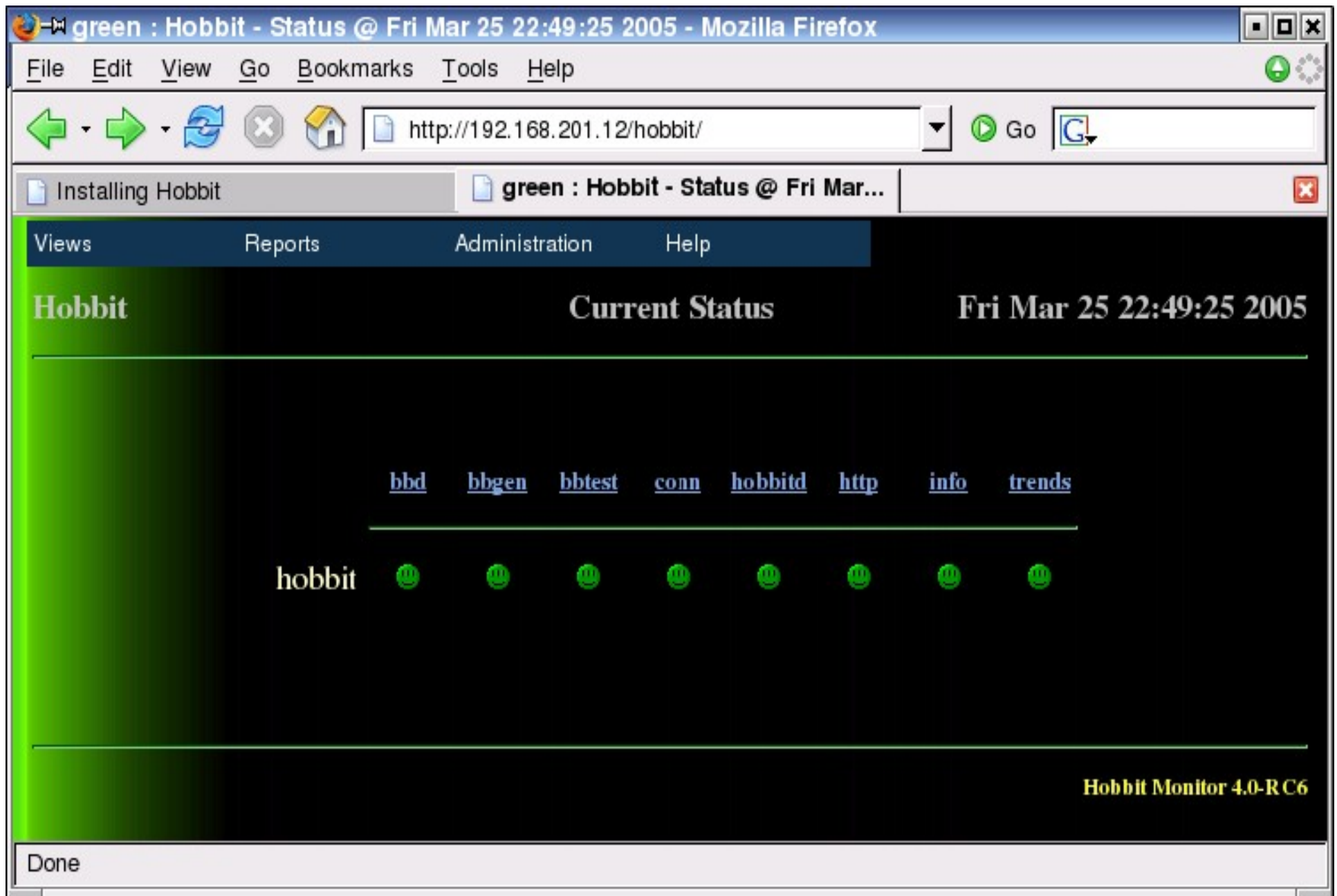
**Apache**

**HTTP SERVER PROJECT**

# Hobbit startup

- Sign on as 'hobbit' user
- Use the command
  - `./server/hobbit.sh start`
- The response should be 'Hobbit started'
- A number of process will be running
  - An explanation of what they do is in the documentation
- After a few minutes use your web browser to navigate to your Hobbit server
  - `http://192.168.201.12/hobbit/`

# Hobbit web page



# Hobbit web page

- Provides the status of the Hobbit server
- Clicking on an icon provides more information
- Including trending graphs

# Hobbit web page

green : Hobbit - bbgen status for hobbit (192.168.201.12) @ Wed Apr 20 14:23:01 2005 - Mozilla Firefox

File Edit View Go Bookmarks Tools Help

http://192.168.201.12/hobbit-cgi/bb-hostsvc.sh?HOSTSVC=hobbit.bbgen&IP=192.168.201.12&DISPLAYNA

**HISTORY**

**Wed Apr 20 14:23:01 2005**

bbgen version 4.0 with hobbitd

Statistics:

Hosts	:	6
Status messages	:	34
Purple messages	:	0
Pages	:	1

TIME SPENT

Event	Starttime	Duration
Startup	1114024981.342609	-
Load links done	1114024981.352569	0.009960
Load bbhosts done	1114024981.369798	0.017229
ACK removal done	1114024981.371965	0.002167
Load STATE done	1114024981.463101	0.091136
Color calculation done	1114024981.463530	0.000429
BB pagegen start	1114024981.463922	0.000392
BB pagegen done	1114024981.510148	0.046226
BB2 generation done	1114024981.650671	0.140523
BBNK generation done	1114024981.660515	0.009844
Summary transmission done	1114024981.660600	0.000085
Run completed	1114024981.660637	0.000037
TIME TOTAL		0.318028

Status unchanged in 3 days,15 hours, 4 minutes  
Status message received from 192.168.201.12

**hobbit bbgen Runtime Last 48 Hours**

■ Run Time  
: 0.4 (cur) : 0.8 (max) : 0.3 (min) : 0.4 (avg)  
Updated: 20-Apr-2005 14:23:14

Done

# Configuring Hobbit

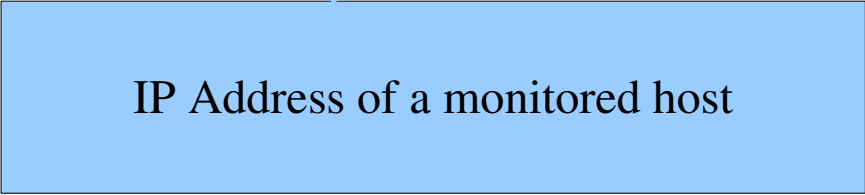
- Configuration involves editing text files
  - Web based configuration is planned
- Primarily `~/server/etc/bb-hosts`
- Changes automatically take affect during the next test cycle

# Hobbit configuration file

```
group Hobbit Servers
192.168.201.12  hobbit      # BBDISPLAY BBPAGER BBNET bbd http://hobbit/
group Linux for zSeries
192.168.201.8   conn2      # ftp dialup
192.168.201.9   db2b       # ftp NK:ftp
group VM/VSE systems
192.168.201.1   vm1        # ftp NK:conn,procs
192.168.201.2   vse1       # dialup
```

# Hobbit configuration file

```
group Hobbit Servers
192.168.201.12 hobbit      # BBDISPLAY BBPAGER BBNET bbd http://hobbit/
group Linux for zSeries
192.168.201.8   conn2     # ftp dialup
192.168.201.9   db2b      # ftp NK:ftp
group VM/VSE systems
192.168.201.1   vm1       # ftp NK:conn,procs
192.168.201.2   vse1      # dialup
```

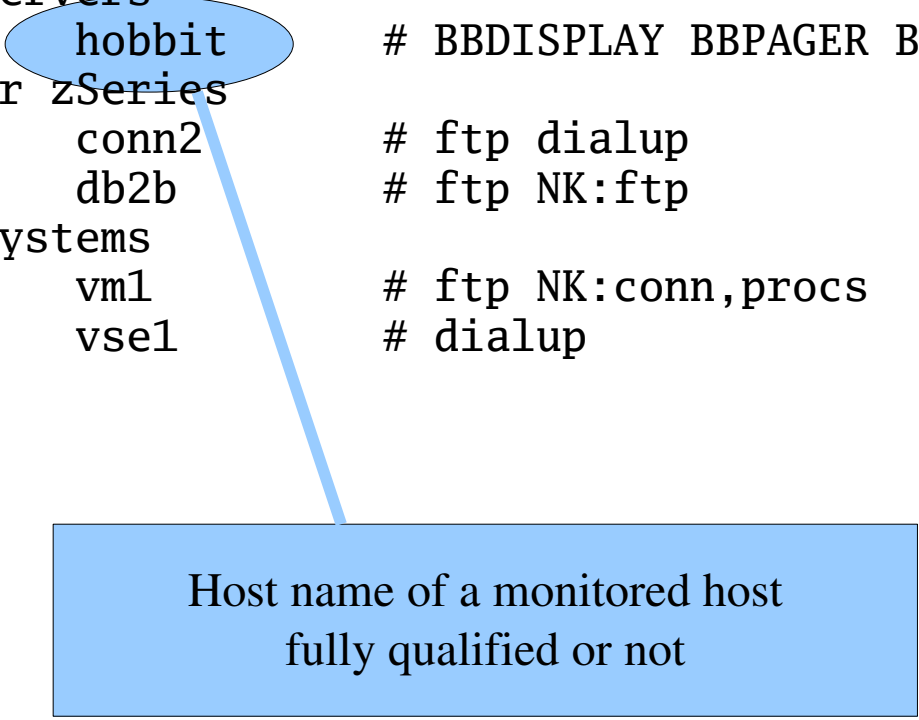


IP Address of a monitored host



# Hobbit configuration file

```
group Hobbit Servers
192.168.201.12 hobbit # BBDISPLAY BBPAGER BBNET bbd http://hobbit/
group Linux for zSeries
192.168.201.8 conn2 # ftp dialup
192.168.201.9 db2b # ftp NK:ftp
group VM/VSE systems
192.168.201.1 vm1 # ftp NK:conn,procs
192.168.201.2 vse1 # dialup
```



Host name of a monitored host  
fully qualified or not

# Hobbit configuration file

```
group Hobbit Servers
192.168.201.12  hobbit      # BBDISPLAY BBPAGER BBNET bbd http://hobbit/
group Linux for zSeries
192.168.201.8   conn2      # ftp dialup
192.168.201.9   db2b       # ftp NK:ftp
group VM/VSE systems
192.168.201.1   vm1        # ftp NK:conn,procs
192.168.201.2   vse1       # dialup
```

Directives used for Big Brother compatibility

# Hobbit configuration file

```
group Hobbit Servers
192.168.201.12  hobbit      # BBDISPLAY BBPAGER BBNET bbd http://hobbit/
group Linux for zSeries
192.168.201.8   conn2      # ftp dialup
192.168.201.9   db2b       # ftp NK:ftp
group VM/VSE systems
192.168.201.1   vm1        # ftp NK:conn,procs
192.168.201.2   vse1       # dialup
```



Identifies this system as the hobbit server

# Hobbit configuration file

```
group Hobbit Servers
192.168.201.12  hobbit      # BBDISPLAY BBPAGER BBNET bbd http://hobbit/
group Linux for zSeries
192.168.201.8   conn2      # ftp dialup
192.168.201.9   db2b       # ftp NK:ftp
group VM/VSE systems
192.168.201.1   vm1        # ftp NK:conn,procs
192.168.201.2   vse1       # dialup
```



Monitor Hobbit's own web site

# Hobbit configuration file

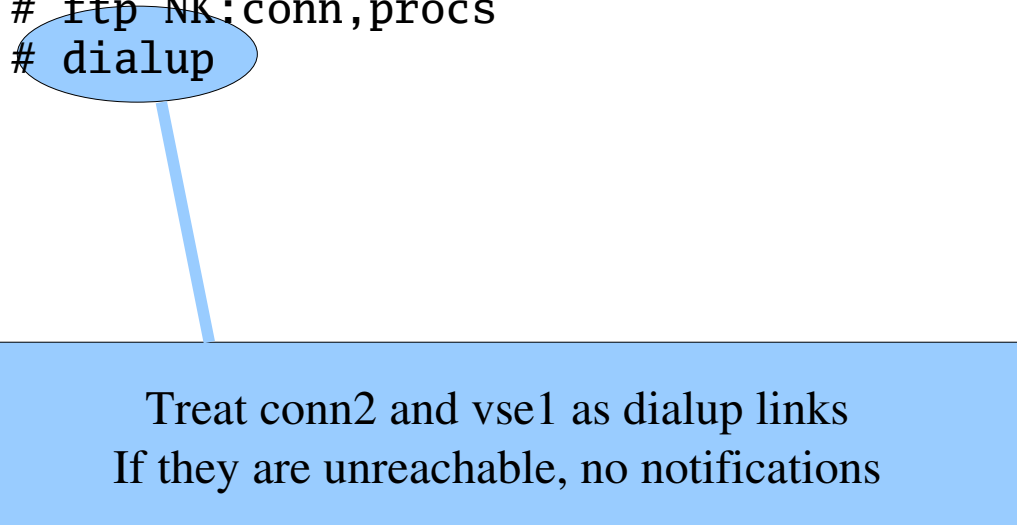
```
group Hobbit Servers
192.168.201.12  hobbit      # BBDISPLAY BBPAGER BBNET bbd http://hobbit/
group Linux for zSeries
192.168.201.8   conn2      # ftp dialup
192.168.201.9   db2b       # ftp NK:ftp
group VM/VSE systems
192.168.201.1   vm1        # ftp NK:conn,procs
192.168.201.2   vse1       # dialup
```



Monitor ftp on conn2, db2b and vm1

# Hobbit configuration file

```
group Hobbit Servers
192.168.201.12  hobbit      # BBDISPLAY BBPAGER BBNET bbd http://hobbit/
group Linux for zSeries
192.168.201.8   conn2      # ftp dialup
192.168.201.9   db2b      # ftp NK:ftp
group VM/VSE systems
192.168.201.1   vm1      # ftp NK:conn,procs
192.168.201.2   vse1      # dialup
```



Treat conn2 and vse1 as dialup links  
If they are unreachable, no notifications

# Hobbit configuration file

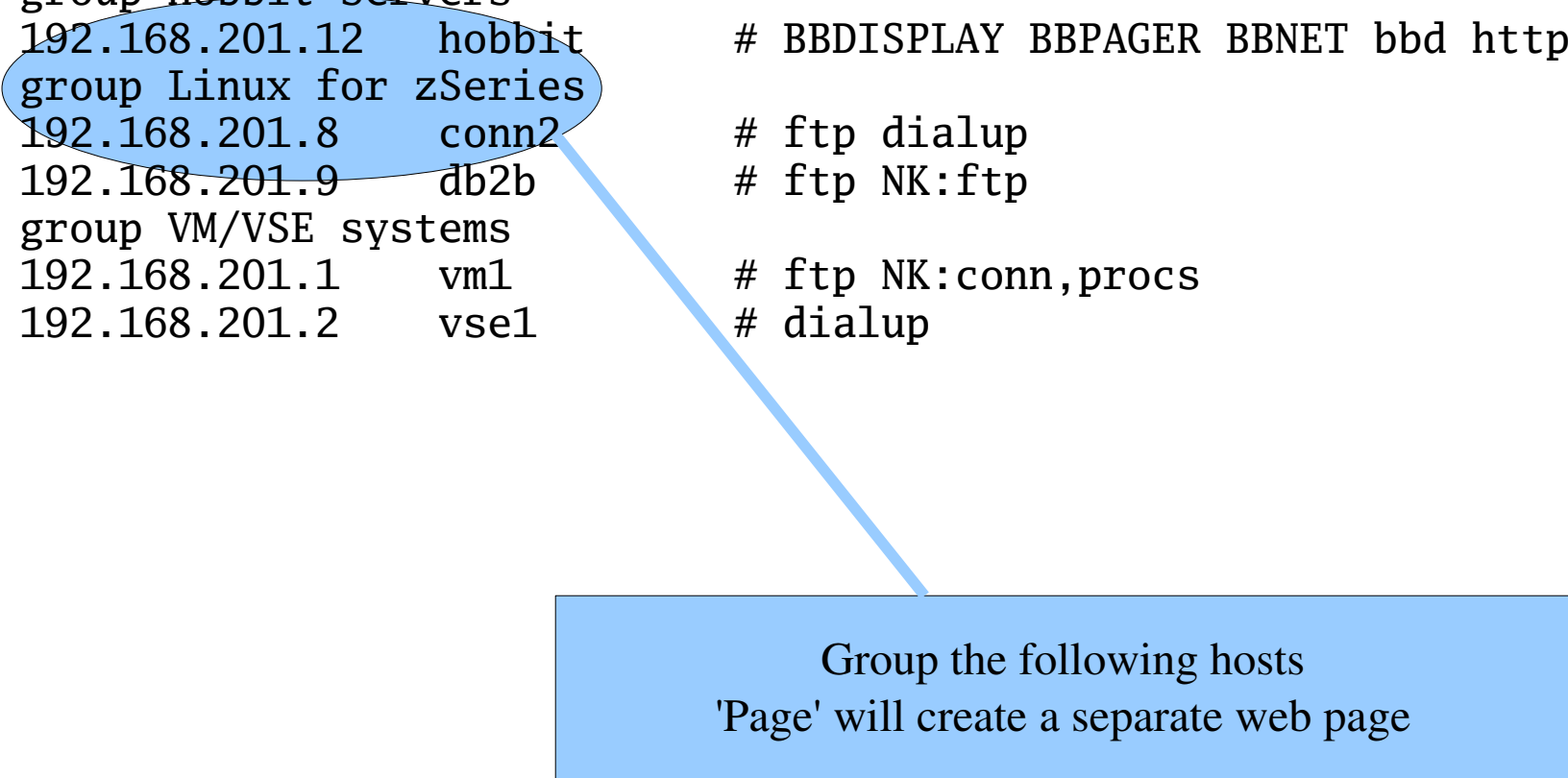
```
group Hobbit Servers
192.168.201.12  hobbit      # BBDISPLAY BBPAGER BBNET bbd http://hobbit/
group Linux for zSeries
192.168.201.8   conn2      # ftp dialup
192.168.201.9   db2b       # ftp NK:ftp
group VM/VSE systems
192.168.201.1   vm1        # ftp NK:conn,procs
192.168.201.2   vse1       # dialup
```



Special directive for the NK View page

# Hobbit configuration file

```
group Hobbit Servers
192.168.201.12 hobbit # BBDISPLAY BBPAGER BBNET bbd http://hobbit/
group Linux for zSeries
192.168.201.8 conn2 # ftp dialup
192.168.201.9 db2b # ftp NK:ftp
group VM/VSE systems
192.168.201.1 vm1 # ftp NK:conn,procs
192.168.201.2 vse1 # dialup
```



Group the following hosts  
'Page' will create a separate web page



Hobbit Current Status Fri Apr 22 15:30:29 2005

Hobbit Servers bbd bbgen bbtest conn hobbitd http info trends

hobbit								
--------	--	--	--	--	--	--	--	--

Linux for zSeries conn ftp info trends

conn2				
db2b				

VM/VSE systems conn cpu ftp getvis info paging pg\_util procs sp\_util trends

vm1				-						
vse1		-	-	-		-	-	-	-	
vse2		-	-			-	-			

# Host or service failure

- Detected by Hobbit during it's network test cycle
- Turns the icon and web page background red
- Shows 'red' in the web page title bar
- Notifies appropriate administrator via email or page

Hobbit Current Status Fri Apr 22 15:55:06 2005

Hobbit Servers bbd bbgen bbtest conn hobbitd http info trends

hobbit [status icons]

Linux for zSeries conn ftp info trends

conn2 [status icons]
db2b [status icons]

VM/VSE systems conn cpu ftp getvis info paging pg\_util procs sp\_util trends

vm1 [status icons]
vse1 [status icons]
vse2 [status icons]

# Other views of the network

- Three different views
  - Main View
  - All non-green view
    - All systems that are currently not green
    - Shows last 6 hours or last 25 state transitions
  - NK view
    - Systems currently not green identified by NK tag

All Monitored Systems OK

5 events received in the past 75 minutes

- Fri Apr 22 16:37:12 2005 db2b ftp
- Fri Apr 22 15:41:57 2005 db2b ftp
- Fri Apr 22 15:36:54 2005 db2b ftp
- Fri Apr 22 15:21:46 2005 db2b ftp
- Fri Apr 22 15:21:46 2005 db2b conn

No events acknowledged in the last 240 minutes

- Main view
- All non-green view
- NK view

# Current non-green Systems Fri Apr 22 15:56:08 2005

[ftp](#) [info](#) [trends](#)

db2b   

4 events received in the past 34 minutes

Fri Apr 22 15:41:57 2005	db2b	ftp			
Fri Apr 22 15:36:54 2005	db2b	ftp			
Fri Apr 22 15:21:46 2005	db2b	ftp			
Fri Apr 22 15:21:46 2005	db2b	conn			

No events acknowledged in the last 240 minutes

- Main view
- All non-green view
- NK view**

# Current Critical Systems

Fri Apr 22 16:04:31 2005

ftp info trends

db2b   

# Host or service return

- When a host or service becomes available
- Icons and page background turn green
- An optional notification can be sent out
- Non-green page shows the transition



# Extending Hobbit

- Hobbit provides a lot of information by itself
- Designed to retain compatibility with Big Brother
- Big Brother has a large number of 'add-on' packages and clients for other operating systems

# Extending Hobbit

- Big Brother extensions are available at <http://www.deadcat.net>
- Community contributions to extend/improve monitoring
- A large number of categories of packages
  - Backup, Clusters, Databases, LDAP, Windows, performance, processes, SNMP, disk, email, files, memory, RAID, power, security, routers, logging, NFS, skins

# Extending Hobbit

- The majority of these should be compatible with Hobbit
- Clients for other operating systems
  - OS/400
  - OS/390 z/OS
  - Netware
  - Alpha OpenVMS
  - z/VM

# Extending Hobbit

- z/VM client
  - Runs in a virtual machine
  - Written in REXX
  - Reports CPU Utilization, Paging, Page and Spool Utilization and running virtual machines

```
VM/VSE systems  conn  cpu  ftp  getvis  info  paging pg_util  procs  sp_util  trends
```

---

vm1	◆	◆	◆	-	◆	◆	◆	◆	◆	◆
vse1	■	-	-	-	◆	-	-	-	-	◆

# Extending Hobbit

- z/OS client
  - Runs as a started task
  - Written in REXX and assembler
  - Reports CPU Utilization, Spooling, Paging, running processes, disk volume utilization, storage

# Extending Hobbit

- Hobbit provides a well defined interface for reporting status messages
  - The same interface Big Brother used
  - Status can be reported
    - Locally (on the Hobbit server) via a command
    - Via a socket connection over port 1984
- Open a socket to the Hobbit server
- Send a status message:

```
status vml.cpu green 30 Mar 2005 08:20:06    CPU Utilization  25%  
z/VM Version 4, Release 4.0, service level 0402 (32-bit)  
AVGPROC-025% 01
```

HISTORY

**28 Apr 2005 15:27:23 CPU Utilization 31%**

z/VM Version 4 Release 4.0, service level 0402 (32-bit)  
AVGPROC-031% 01

Status unchanged in 28 days,5 hours, 47 minutes  
Status message received from 192.168.201.1

[hobbit graph la](#)

# When clients don't respond

- Hobbit expects clients to communicate at regular intervals
- Most default to the standard Hobbit interval of 5 minutes
- If a status report is not received after 30 minutes, Hobbit turns the client tests purple
- If properly configured a notification will be sent out
- Green is restored when the client is restarted



Hobbit Servers

	bbd	bbgen	bbtest	conn	hobbitd	http	info	trends
hobbit	◆	◆	◆	◆	⊗	◆	◆	◆

Linux for zSeries

	conn	ftp	info	trends
conn2	⊗	⊗	◆	◆
db2b	◆	◆	◆	◆

VM/VSE systems

	conn	cpu	ftp	getvis	info	paging	pg_util	procs	sp_util	trends
vm1	◆	⊗	◆	-	◆	⊗	⊗	⊗	⊗	◆
vse1	⊗	-	-	-	◆	-	-	-	-	◆
vse2	⊗	-	-	⊗	◆	-	-	⊗	⊗	◆

# Hobbit operations

- Starting and stopping
- Outage notification
- Alert Acknowledgment
- Enable/Disable
- Reporting

# Starting and stopping Hobbit

- The traditional Linux start/stop process can be used
- Script is not provided, easy to create
- Copy existing script (like cron) to hobbit
- Will appear in output of `chkconfig --list` so that startup can be turned on or off

# Starting and stopping Hobbit

```
#!/bin/sh
### BEGIN INIT INFO
# Provides:          hobbit
# Required-Start:    network
# Required-Stop:     network
# Default-Start:     3 5
# Default-Stop:      3
# Description:       Start the hobbit network monitor
### END INIT INFO

case "$1" in
    start)
        echo "Starting Hobbit"
        su - hobbit -c "cd /home/hobbit/server; ./hobbit.sh start"
        ;;
    stop)
        echo "Stopping Hobbit"
        su - hobbit -c "cd /home/hobbit/server; ./hobbit.sh stop"
        ;;
    restart)
        $0 stop
        $0 start
        rc_status
        ;;
    *)
        echo "Usage: $0 {start|stop|restart}"
        exit 1
        ;;
esac
```

# Outage Notification

- A page or email is sent out when a non-green condition occurs
- Most cell phones are email capable
- Very configurable and flexible
- Very good information in the docs
- Configuration data in  
~/server/etc/hobbit-alerts.cfg
- File contains rules about the host and service and who is notified

# Outage Notification

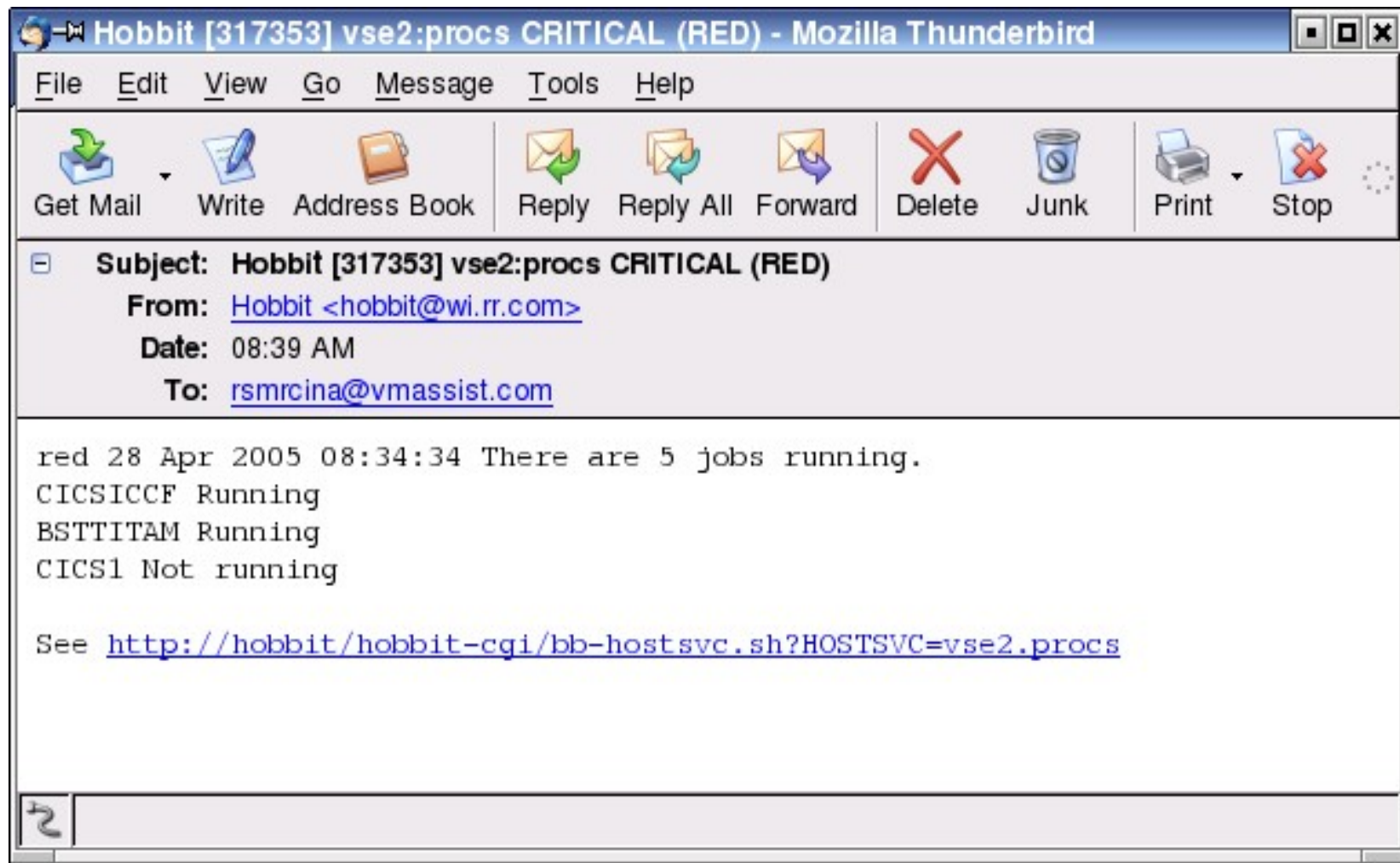
- Simple example

```
HOST=vse2
```

```
MAIL rsmrcina@vmassist.com
```

- Sends an email to [rsmrcina@vmassist.com](mailto:rsmrcina@vmassist.com) if any test related to vse2 fails

# Outage Notification



# Outage Notification

- SERVICE – notify for one or more services
  - SERVICE=conn,http,ftp
- REPEAT – repeat notification, default 30m
  - REPEAT=1h
- TIME – time range for notification
  - TIME=\*:0730:2100
- COLOR – only notify for certain color
  - COLOR=red



# Outage Notification

- **DURATION** – Only alert if outage is longer than time indicated
  - `DURATION>10m`
  - `DURATION<2h`
- **RECOVERED** – Sends alert when host/service returns
- **SCRIPT** – Used to code alternative alert mechanism, eg. SMS page

# Outage Notification

- Wildcards can be used in the hostname and service name
  - `HOST=%(wwwlintranet|support|mail).foo.com`
- To save typing, macros are supported
  - `$ZLINUX=%(conn2ldb2b) $VSE=%(vse1|vse2)`
  - Anywhere a macro is used, it is replaced
  - Works with recipients also
  - `$ZSUPPORT=%(rsmrcinaljdoelhelpdesk)@vmassist.com`

# Outage Notification

HOST=conn2,db2b

MAIL [rsmrcina@vmassist.com](mailto:rsmrcina@vmassist.com)

MAIL [jdoe@vmassist.com](mailto:jdoe@vmassist.com)

MAIL [helpdesk@vmassist.com](mailto:helpdesk@vmassist.com)

\$ZLINUX=%(connldb2b)

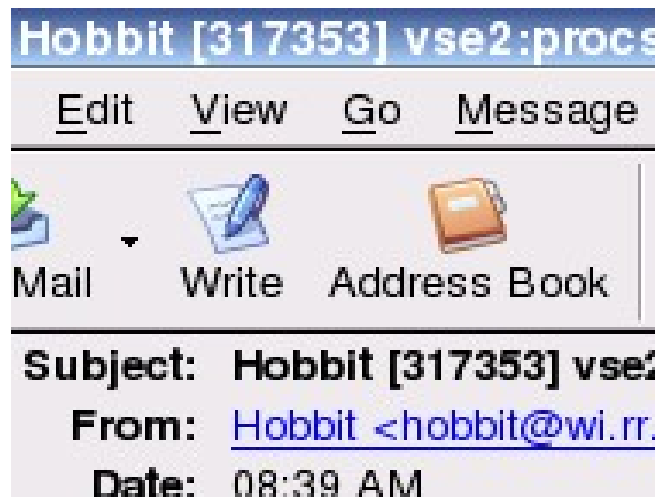
\$ZSUPPORT=%(rsmrcinaljdoelhelpdesk)@vmassist.com

HOST=\$ZLINUX

MAIL \$ZSUPPORT

# Alert Acknowledgment

- An administrator can acknowledge an alert
  - Stops notification
  - Changes web page
  - Let's users know that a resolution is near
- Each alert includes an acknowledgment code



# Alert Acknowledgment

- On the Hobbit 'Administration Menu' click Acknowledge Alert

Hobbit - Acknowledge Alert - Mozilla Firefox

File Edit View Go Bookmarks Tools Help

http://192.168.201.12/hobbit-seccgi/bb-ack.sh

Views Reports Administration Help

Hobbit Acknowledge Alert Thu Apr 28 11:04:12 2005

Find host  
Acknowledge alert  
Enable/disable

Estimated time to resolve issue: 60 minutes

Explanation/Cause of problem:

Acknowledgment Code:

Send

Hobbit Monitor 4.0

http://192.168.201.12/hobbit-seccgi/null

# Alert Acknowledgment

- Enter
  - Duration of outage
  - Explanation
  - Acknowledgment code
- Hit Send
- Red icon turns to a check mark to indicate acknowledgment

Hobbit

Current Status

Thu Apr 28 13:27:36 2005

Hobbit Servers

bbd bbgen bbtest conn hobbitd http info trends

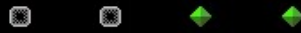
hobbit



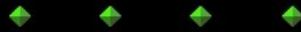
Linux for zSeries

conn ftp info trends

conn2



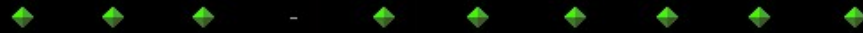
db2b



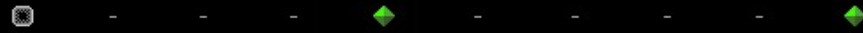
VM/VSE systems

conn cpu ftp getvis info paging pg\_util procs sp\_util trends

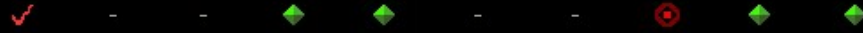
vm1



vse1



vse2



Hobbit

vse2 - conn

Thu Apr 28 13:29:44  
2005

HISTORY

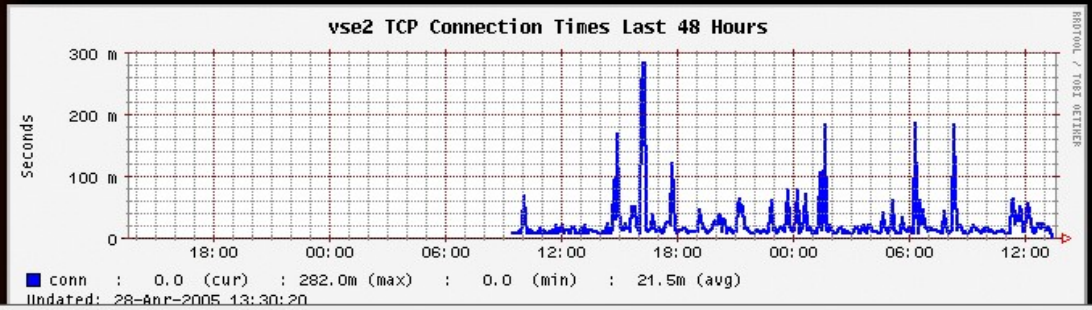
Thu Apr 28 13:29:39 2005 conn NOT ok

Service conn on vse2 is not OK : Host does not respond to ping

System unreachable for 3 poll periods (428 seconds)

192.168.201.3 is unreachable

Status unchanged in 0 hours, 7 minutes  
Status message received from 192.168.201.12  
Current acknowledgment: System abend  
Aked by: rks0 (192.168.1.101)  
Next update at: 14:25 2005-04-28





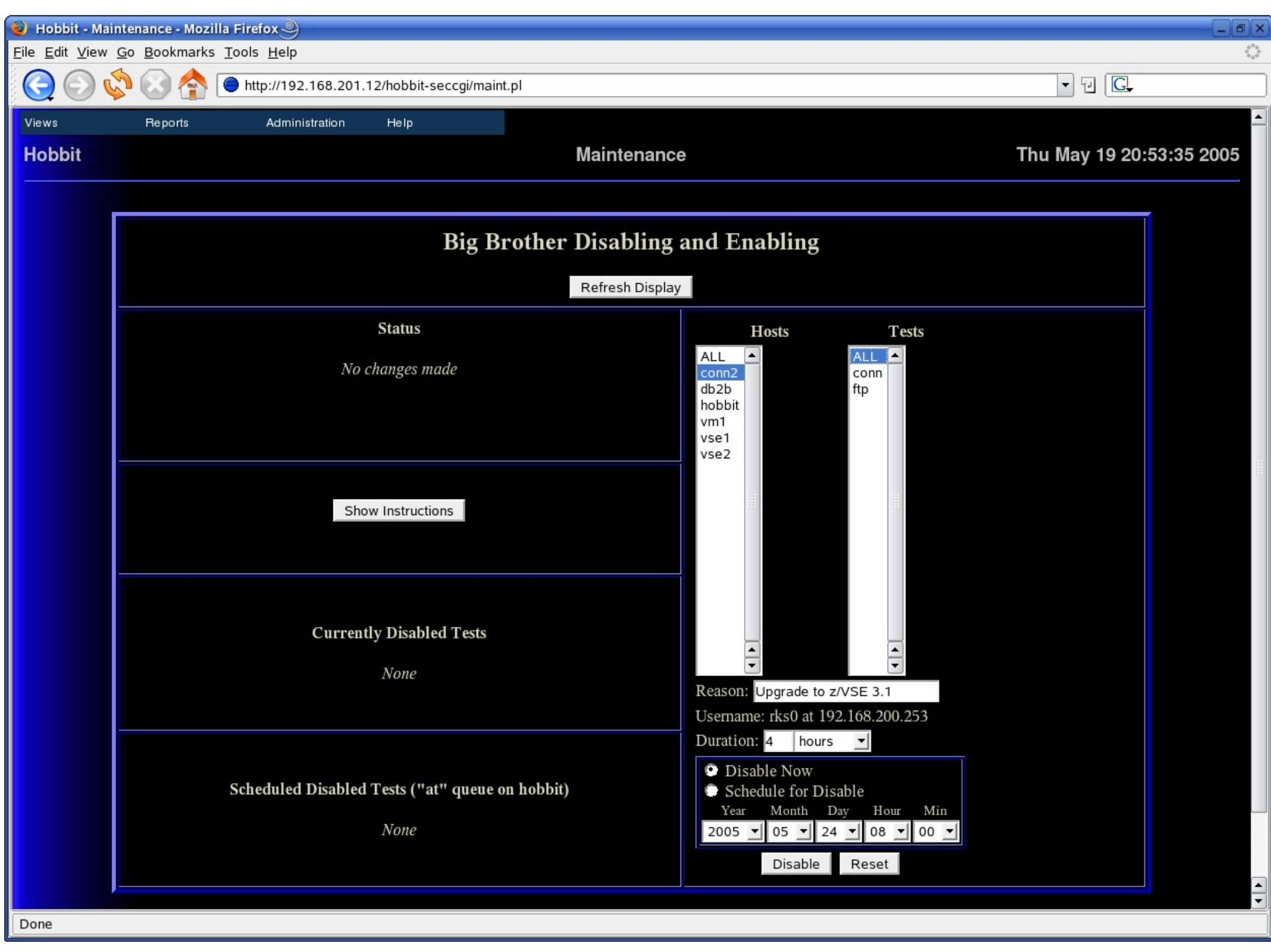
# Enable/Disable

- Stop or start the test for a service
- Use for planned outages

The screenshot shows a Mozilla Firefox browser window displaying the Hobbit Status page. The browser's address bar shows the URL `http://192.168.201.12/hobbit/`. The page has a dark theme with a navigation menu at the top containing 'Views', 'Reports', 'Administration', and 'Help'. The 'Administration' menu is open, showing options: 'Find host', 'Acknowledge alert', and 'Enable/disable', with 'Enable/disable' highlighted in green. The main content area is titled 'Current Status' and shows the date 'Thu May 19 20:27:04 2005'. Below this, there is a section for 'Hobbit Servers' with a list of server names: `bbd`, `bbgen`, `bbtest`, `conn`, `hobbitd`, `http`, `info`, and `trends`. Underneath these names, the server 'hobbit' is listed with several status indicators: four green diamonds and four green smiley faces.

# Enable/Disable

- Select the host and test to disable
- Enter a reason and timeframe
- Indicate whether to disable now or schedule for another time
- Press disable button



### Big Brother Disabling and Enabling

Refresh Display

#### Status

No changes made

Show Instructions

#### Currently Disabled Tests

None

#### Scheduled Disabled Tests ("at" queue on hobbit)

None

#### Hosts

- ALL
- conn2
- db2b
- hobbit
- vm1
- vse1
- vse2

#### Tests

- ALL
- conn
- ftp

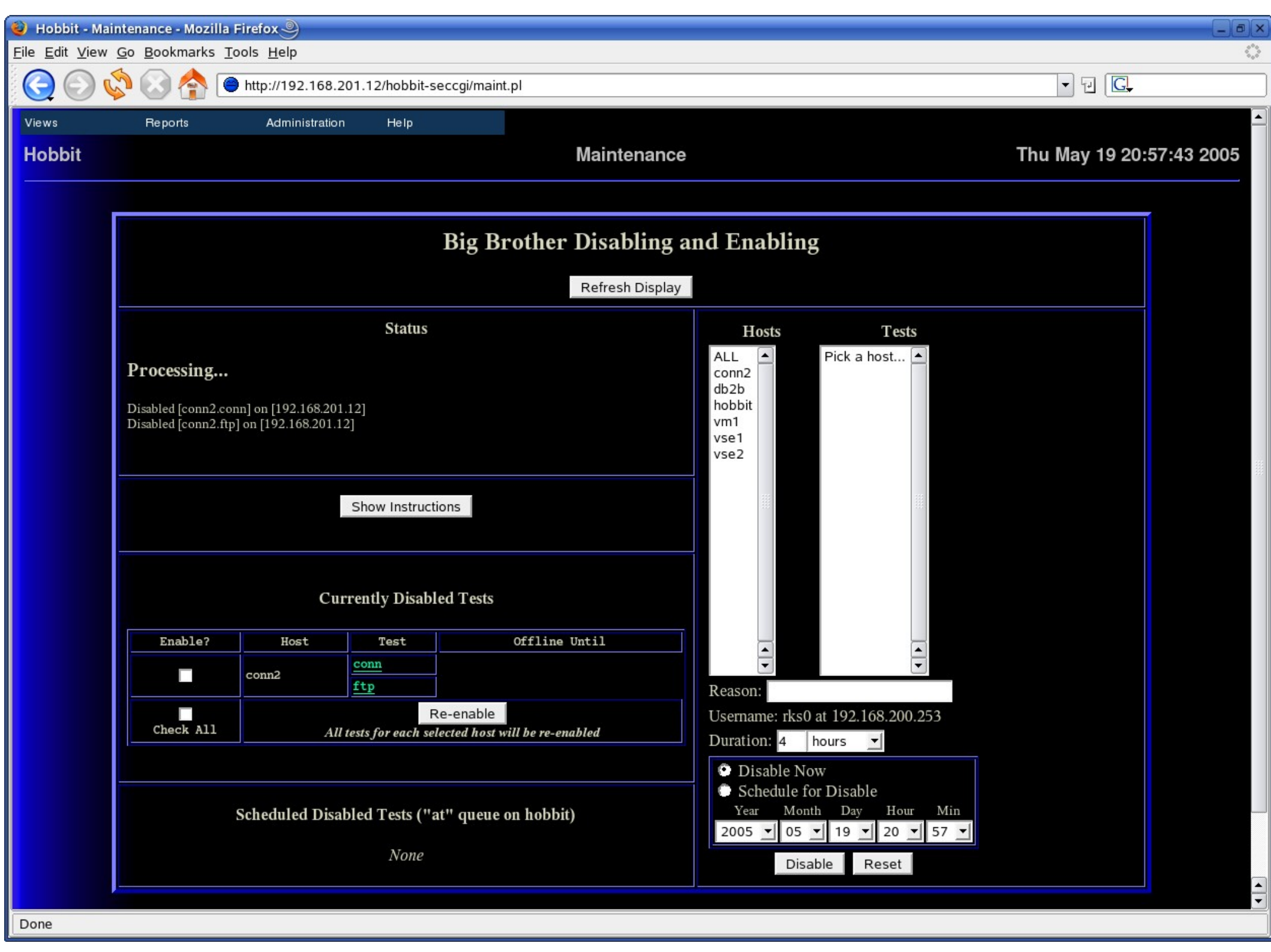
Reason: Upgrade to z/VSE 3.1

Username: rks0 at 192.168.200.253

Duration: 4 hours

Disable Now  
 Schedule for Disable  
 Year: 2005 Month: 05 Day: 24 Hour: 08 Min: 00

Disable Reset



### Big Brother Disabling and Enabling

Refresh Display

**Status**

**Processing...**

Disabled [conn2.conn] on [192.168.201.12]  
 Disabled [conn2.ftp] on [192.168.201.12]

Show Instructions

**Currently Disabled Tests**

Enable?	Host	Test	Offline Until
<input type="checkbox"/>	conn2	<a href="#">conn</a>	
		<a href="#">ftp</a>	
<input type="checkbox"/>	<b>Re-enable</b>		
<b>Check All</b>	<i>All tests for each selected host will be re-enabled</i>		

**Scheduled Disabled Tests ("at" queue on hobbit)**

None

**Hosts**

ALL  
 conn2  
 db2b  
 hobbit  
 vm1  
 vse1  
 vse2

**Tests**

Pick a host...

Reason:

Username: rks0 at 192.168.200.253

Duration: 4 hours

Disable Now  
 Schedule for Disable

Year: 2005 Month: 05 Day: 19 Hour: 20 Min: 57

Disable Reset

Hobbit Servers

	<a href="#">bbd</a>	<a href="#">bbgen</a>	<a href="#">bbtest</a>	<a href="#">conn</a>	<a href="#">hobbitd</a>	<a href="#">http</a>	<a href="#">info</a>	<a href="#">trends</a>
hobbit								

Linux for zSeries

	<a href="#">conn</a>	<a href="#">ftp</a>	<a href="#">info</a>	<a href="#">trends</a>
conn2				
db2b				

VM/VSE systems

	<a href="#">conn</a>	<a href="#">cpu</a>	<a href="#">ftp</a>	<a href="#">getvis</a>	<a href="#">info</a>	<a href="#">paging</a>	<a href="#">pg_util</a>	<a href="#">procs</a>	<a href="#">sp_util</a>	<a href="#">trends</a>
vm1				-						
vse1		-	-	-		-	-	-	-	
vse2		-	-			-	-			

# Hobbit reports

- Event Log report is similar to the non-green view
  - You can control how far back to go
  - You can control how many events to show

**Hobbit** **Eventlog** **Wed Apr 27 11:05:26 2005**

How long to go back in time:  minutes  
Max. number of events

View log

# Hobbit Eventlog Wed Apr 27 11:08:07 2005

23 events received in the past 5925 minutes

Wed Apr 27 10:09:05 2005	db2b	ftp			
Wed Apr 27 10:09:05 2005	db2b	conn			
Wed Apr 27 09:38:46 2005	hobbit	hobbitd			
Wed Apr 27 09:38:46 2005	vse2	getvis			
Wed Apr 27 09:38:46 2005	vse2	procs			
Wed Apr 27 09:38:46 2005	vse2	sp_util			
Wed Apr 27 09:33:43 2005	hobbit	hobbitd			
Wed Apr 27 09:30:55 2005	hobbit	http			
Wed Apr 27 09:29:01 2005	hobbit	http			
Sat Apr 23 15:36:59 2005	hobbit	bbtest			
Sat Apr 23 15:32:26 2005	hobbit	bbtest			
Sat Apr 23 13:56:58 2005	hobbit	bbtest			
Sat Apr 23 13:51:49 2005	hobbit	bbtest			
Sat Apr 23 12:21:33 2005	hobbit	bbtest			
Sat Apr 23 12:16:21 2005	hobbit	bbtest			
Sat Apr 23 08:45:49 2005	vse2	procs			
Sat Apr 23 08:44:34 2005	hobbit	hobbitd			
Sat Apr 23 08:39:34 2005	hobbit	hobbitd			
Sat Apr 23 08:36:54 2005	hobbit	http			



# Hobbit reports

- Availability report will show the percentage of time that each host and service is available
- Enter a date range and one of three options
  - Critical events (red)
  - Non-green events
  - All events

- Event log Report
- Availability Report
- Snapshot Report

### Hobbit Monitor Availability Report

April 17 2005 - to - April 23 2005 Display non-green events

Generate Report

Hobbit Availability Report Apr 17 2005 - Apr 23 2005

Hobbit Servers bbd bbgen bbtest conn hobbitd http

hobbit **99.98**

Linux for zSeries conn ftp

conn2   
db2b **90.82** **99.45**

VM/VSE systems conn cpu ftp getvis paging pg\_util procs sp\_util

vm1 -   
vse1 - - - - - - -  
vse2 - - - - **99.77**

# Hobbit reports

- Snapshot report
  - A point in time image of how the Hobbit web page looked at a point in the past
  - Enter a date and time

Hobbit Snapshot Report

April 23 2005 8 45 00

Generate Report

Hobbit

Snapshot Report

Sat Apr 23 08:45:00 2005

Hobbit Servers bbd bbgen bbtest conn hobbitd http

hobbit      

Linux for zSeries conn ftp

conn2  

db2b  

conn:red:10.10 minutes

VM/VSE systems conn cpu ftp getvis paging pg\_util procs sp\_util

vm1    -    

vse1  - - - - - - -

vse2  - -  - - -  

# Wrapping up...

- Enterprise class monitoring solution
- Open Source
- Under heavy development, but feature rich
- Runs on Linux (including zSeries!)
- Can be well integrated into the zSeries environment
- Easy to install and configure
- Expandable, very useful and performs well

# Questions...



Rich Smrcina  
rsmrcina@vmassist.com