



What's all the Hype on System z?

Linux – System z

Why linux experts are choosing the System z platform.

What makes System z an outstanding choice for linux workloads.

Why IT organizations are turning to System z to solve common problems.

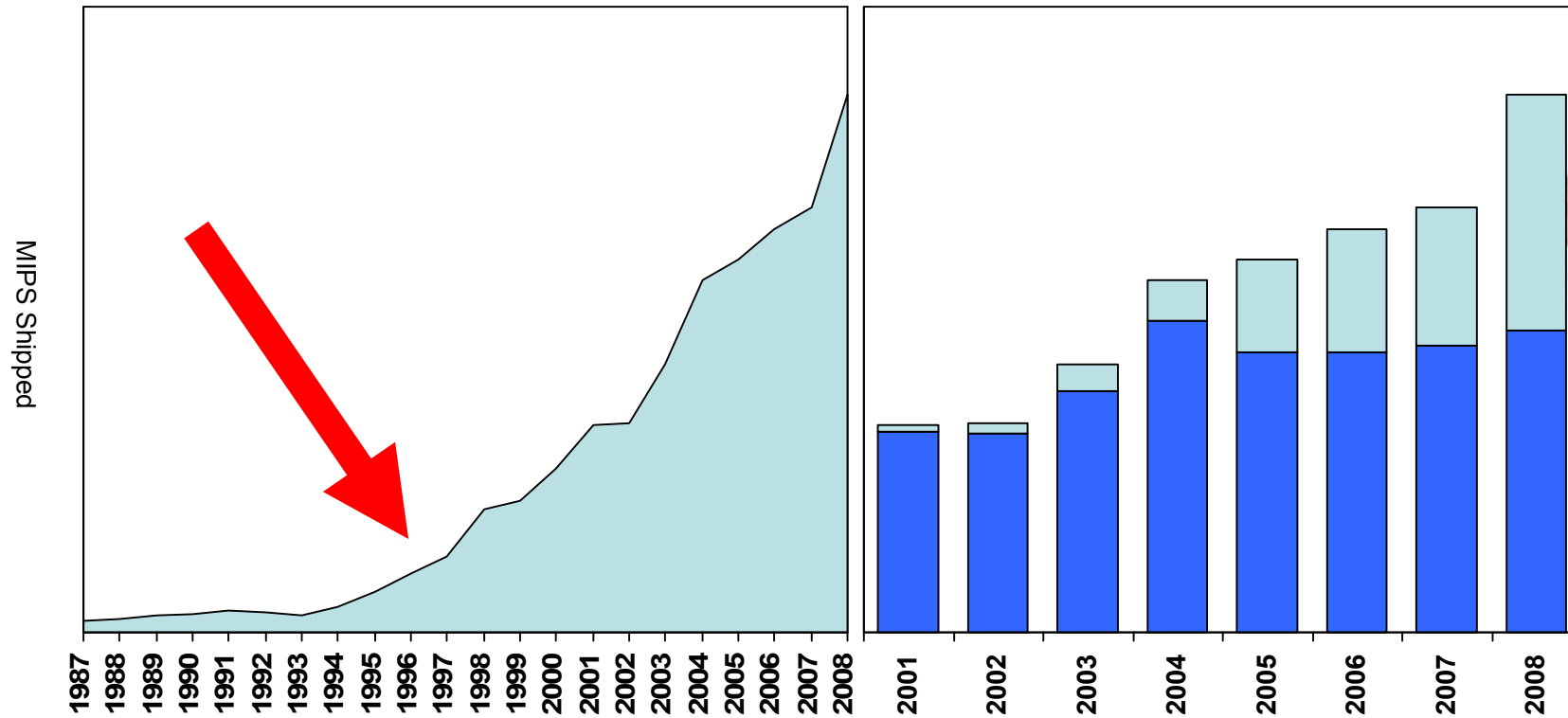


Bill Reeder
*Linux for System z
Sales and Strategy*
206-587-2152
breeder@us.ibm.com





IBM System z Workload Growth Worldwide



IFLs + zIIPs + zAAPs + Core Business

What z10 brings to Linux Customers

Ø4.4 GHz... Quad Core Processor Up to 64 IFLs

ØUp to 1.5 TB memory

ØLarge Page Support

ØHardware Decimal Floating Point

ØJust in Time Deployment for capacity offerings – permanent and temporary

Ø6.0 GBps HiperSockets

ØSCSI IPL

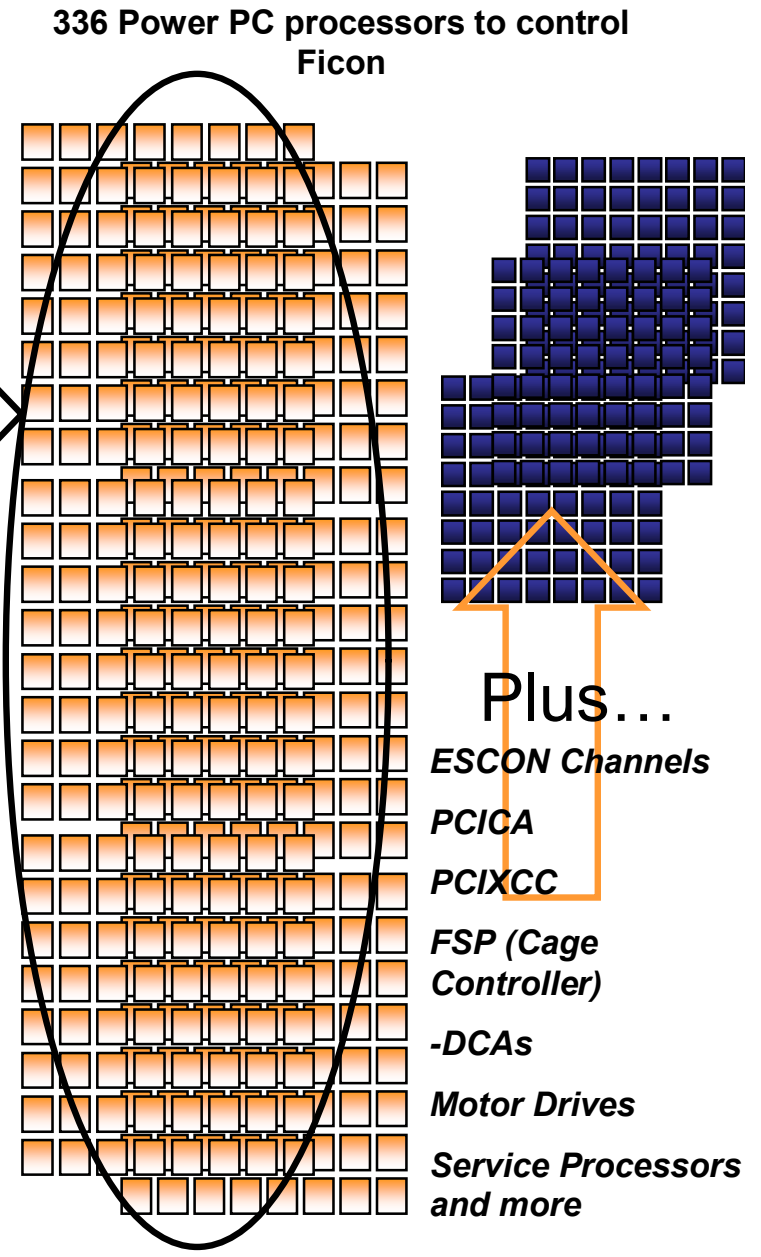
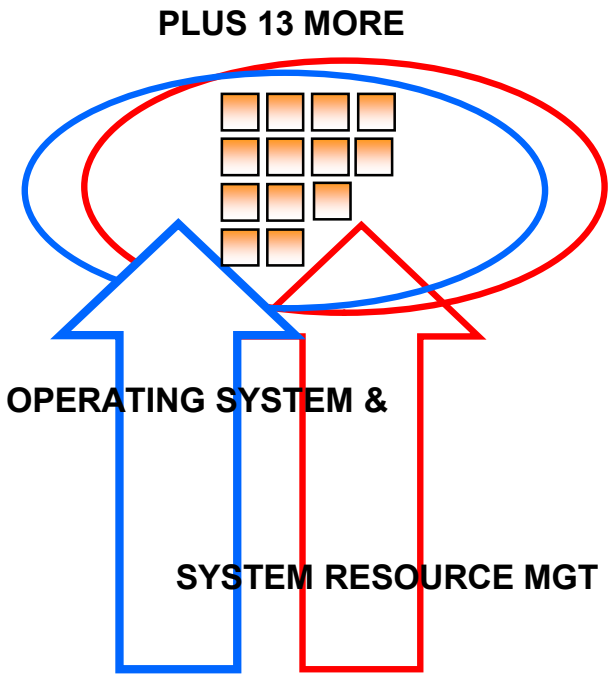
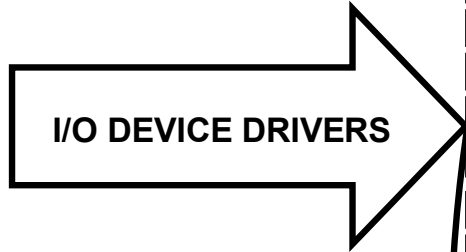
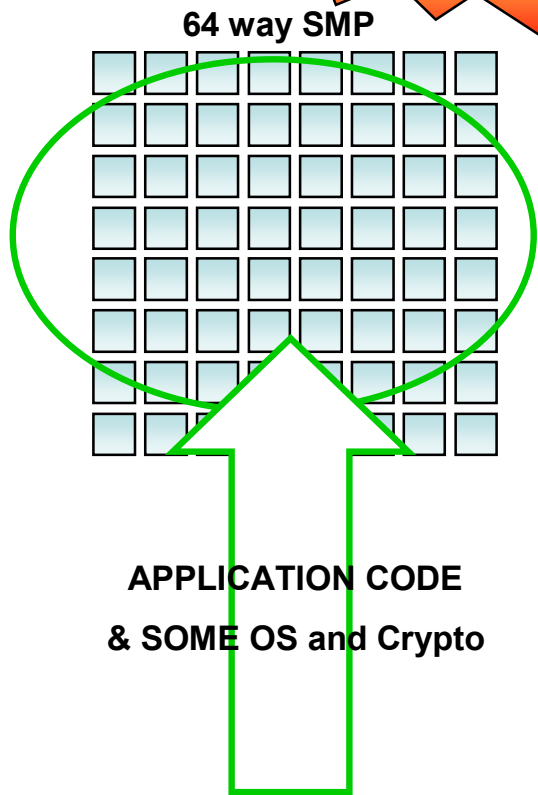
ØOSA-Express3 10 Gbps

ØHiperSockets Layer 2 Support



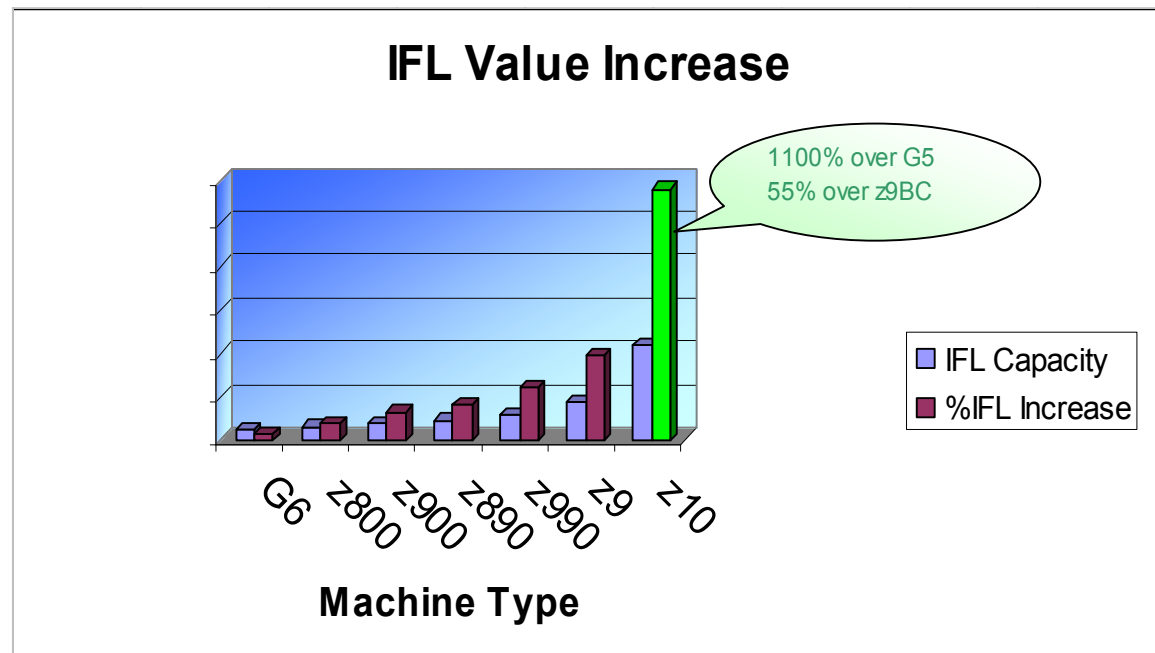
Implementation "How to build a 64-WAY Mainframe"

More than 400 Processors!



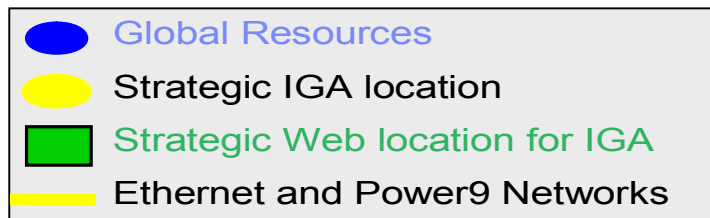
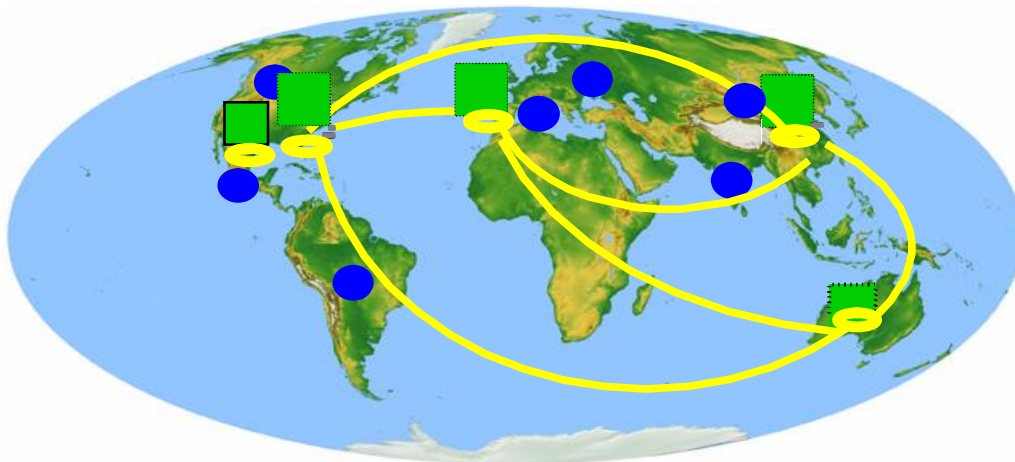
Unique Value of IFL, zAAP and zIIP

- § 55% more capacity from previous generation!!!
- § IFL, zAAP and zIIP Price has remained constant
- § Customer upgrading to new machine can migrate IFL, zAAP and zIIP to new machine
- § Specialty Engines run at FULL speed even on sub-capacity machines



IBM's Transformation: An Ongoing Journey

IBM Strategic Delivery Model



	IBM Metrics	1997	Today
TECHNOLOGY	CIOs	128	1
	Host data centers	155	7
	Web hosting centers	80	5
	Network	31	1
	Applications	15,000	4,700

Tactical and operational efficiencies

- § Consolidation of infrastructure
- § Application consolidation/reduction
- § Global resource deployment
- § Enterprise end-to-end architecture optimization

Applications moving to System z tend to be strategic and mission critical

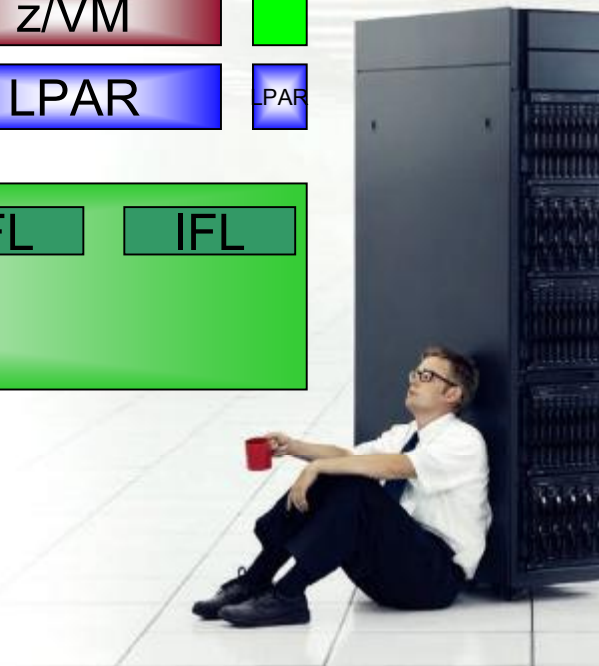
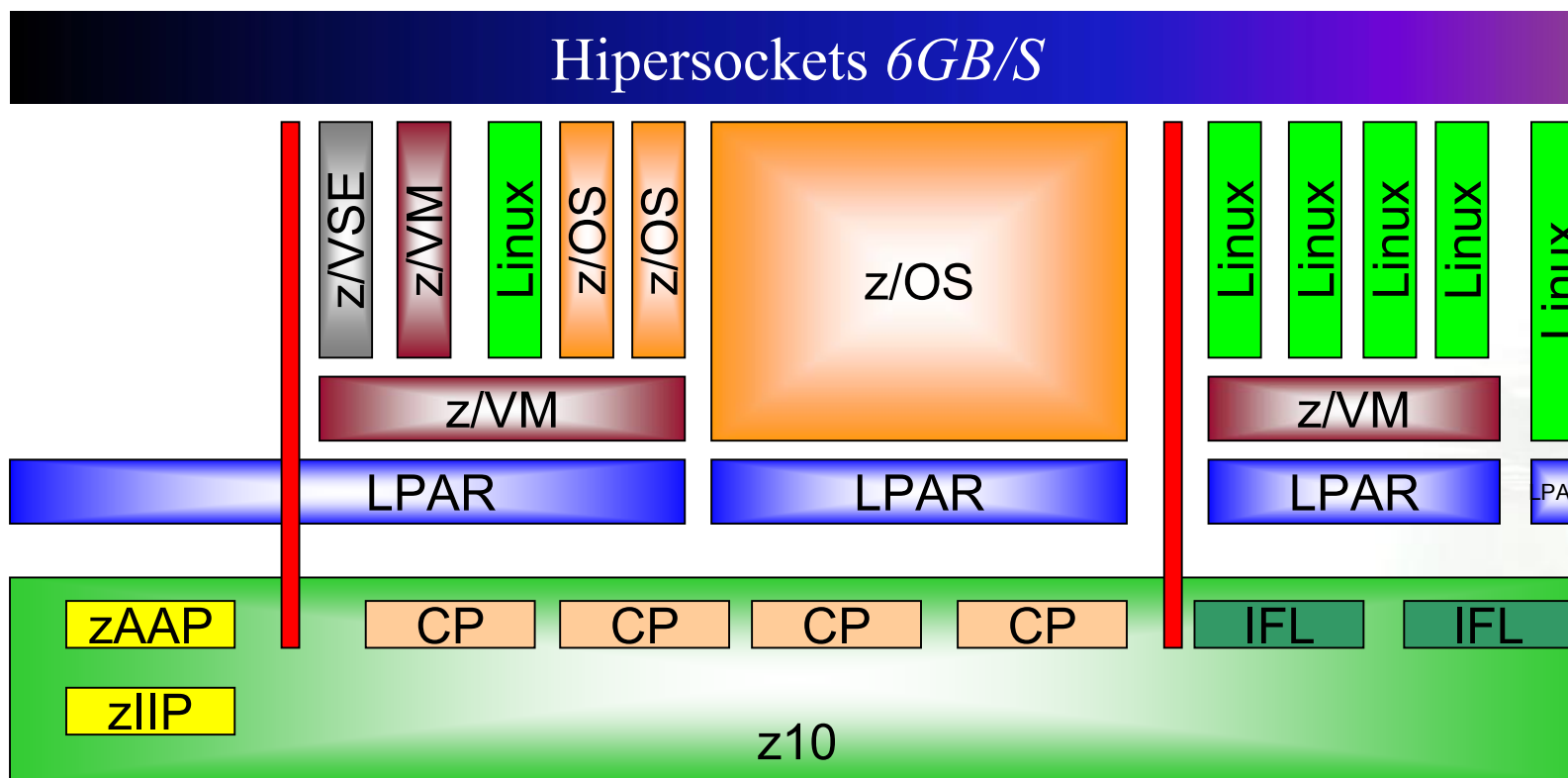
Application View

- § Includes all business units, a cross-section of business functions
- § Most are internally developed web and domino-based
- § Tend to be complex with multiple servers and interfaces
- § Almost 50% of initial applications are classified as "Gold"

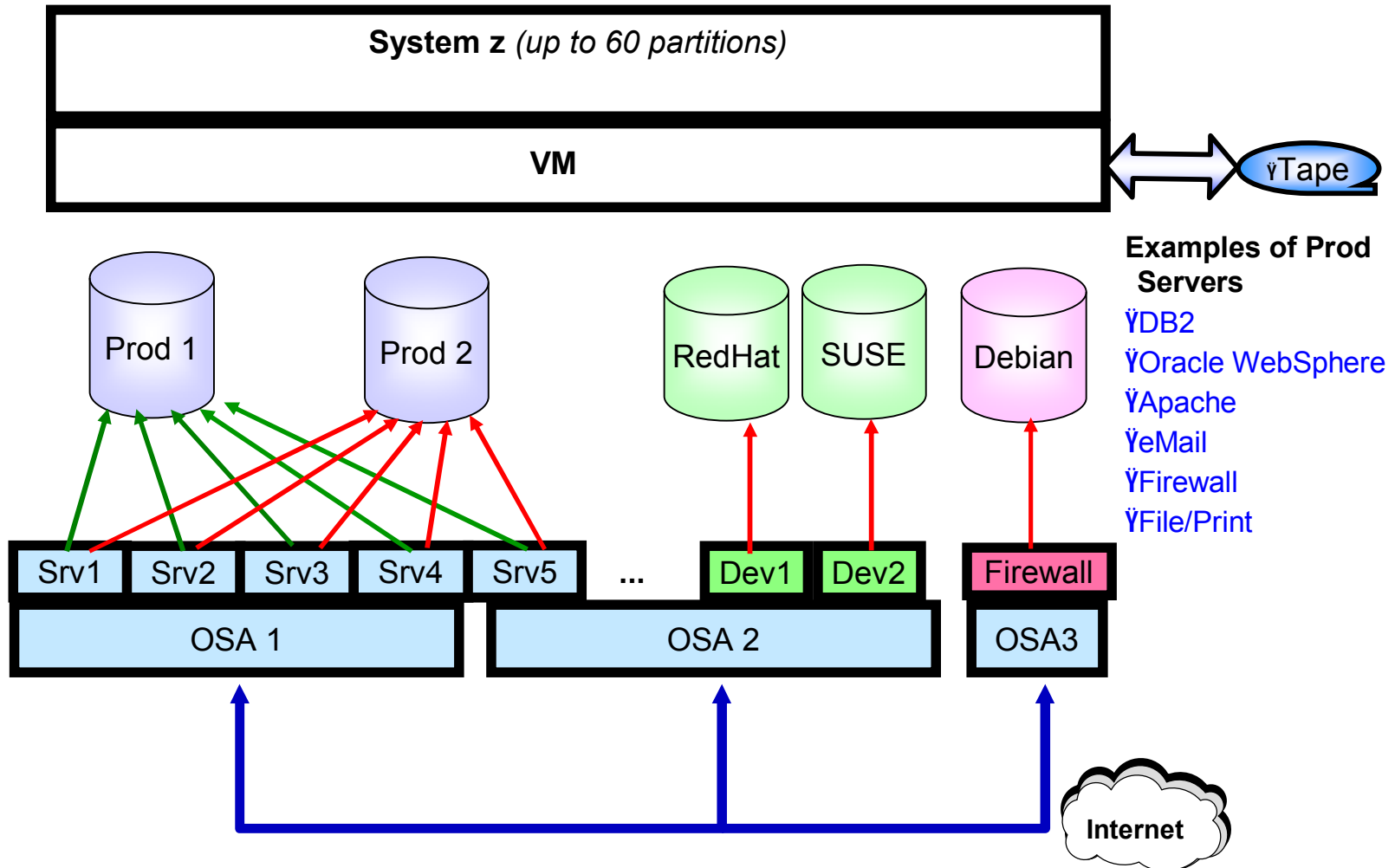
<http://ecm.bluehost.ibm.com/success/iga.htm>



Linux for System z Choices



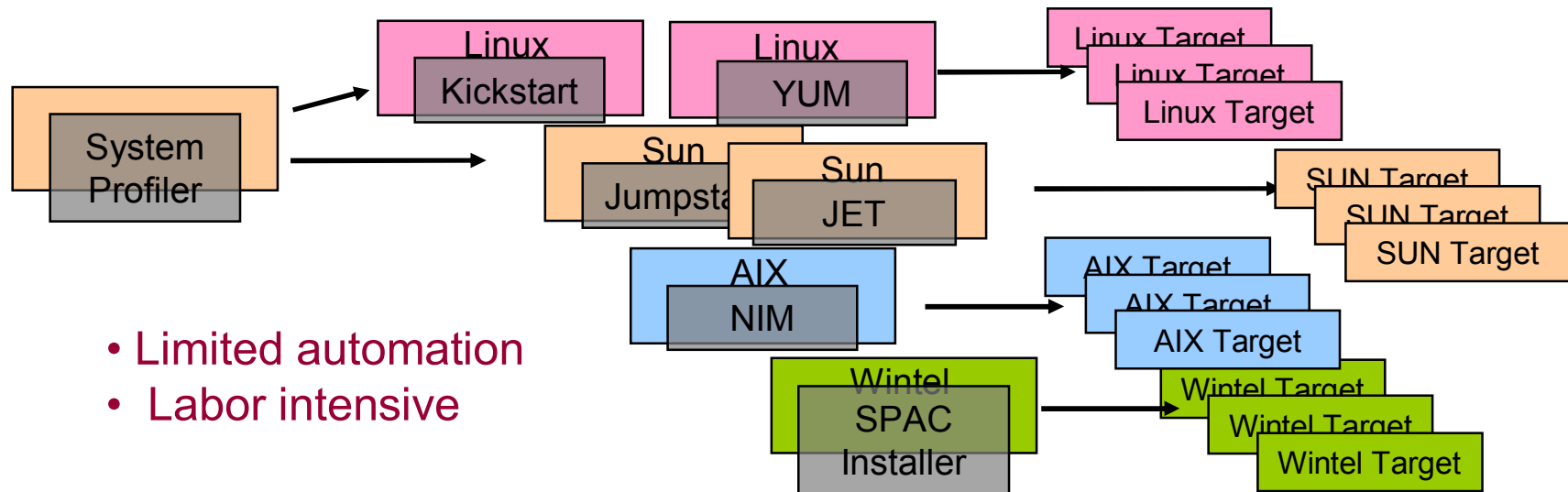
Flexible and Robust Linux Installation



Extreme Virtualization and Server Management Leadership

§ 32% of Server farm for distributed servers are for administration , managing and provisioning servers

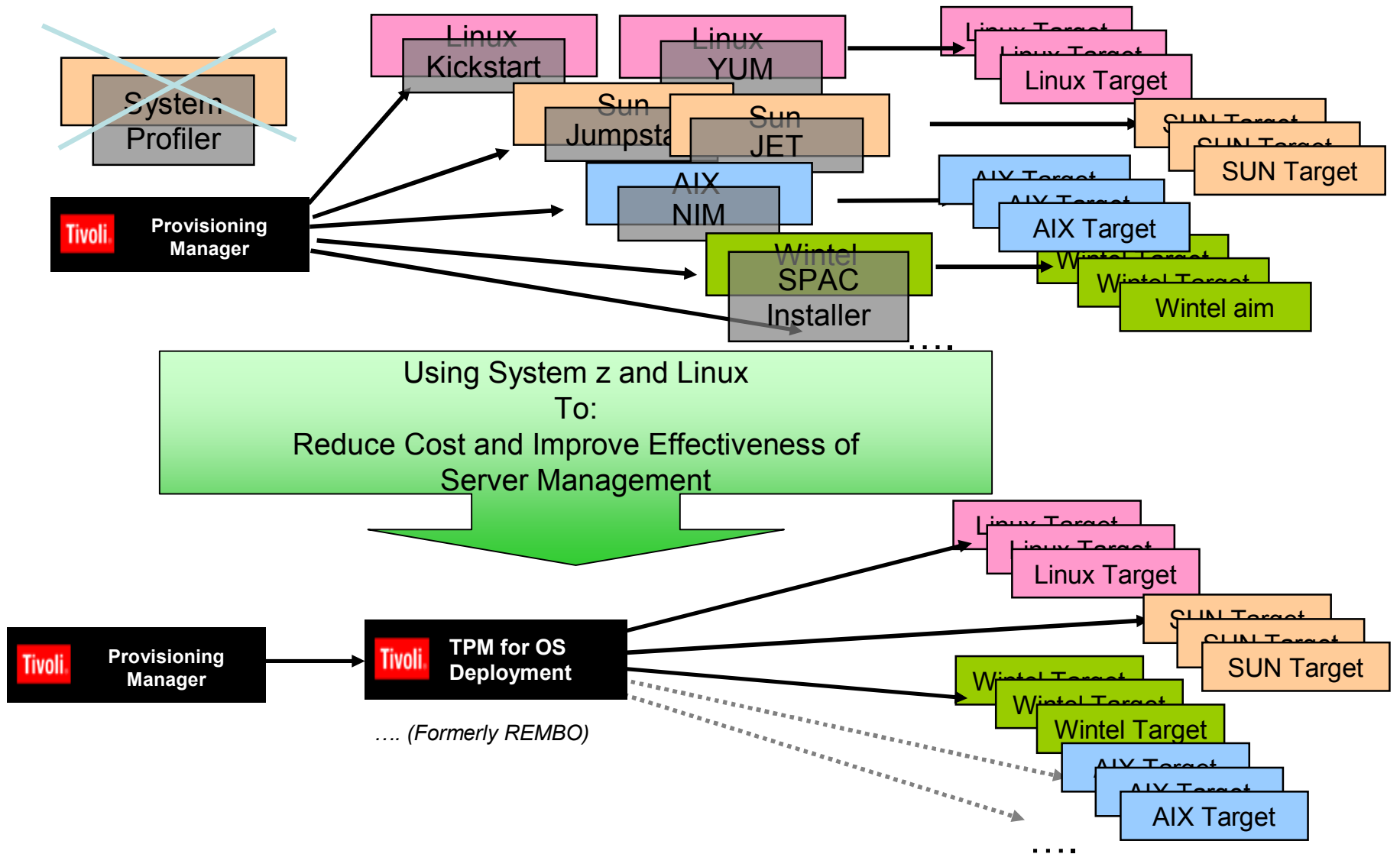
§ Real Customer example.. Managing 37,300 servers world wide would take 26 IFLs on a z990.



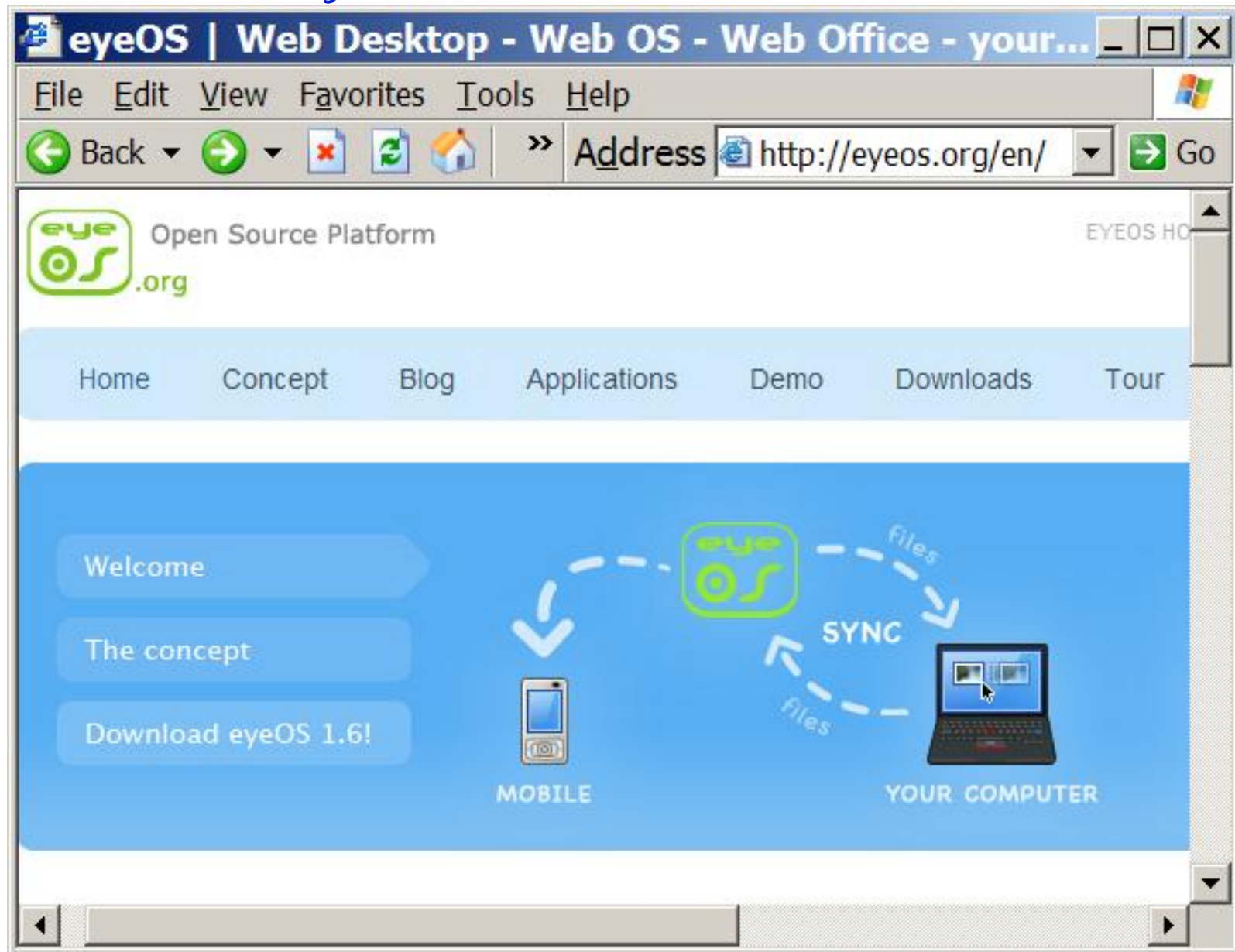
- Limited automation
- Labor intensive

Local Implementation (per site)

Phase one simplification and administrative cost reduction



eyeOS hosted on System z



Logon screens follow accepted interface rules

Welcome to ns27lnx3.nivt.raleigh.ibm.com - Microsoft Inter...

File Edit View Favorites Tools Help

Enter

Create account

New User

Username

Password

Language for the session

(Default / User's profile)

New User

Password

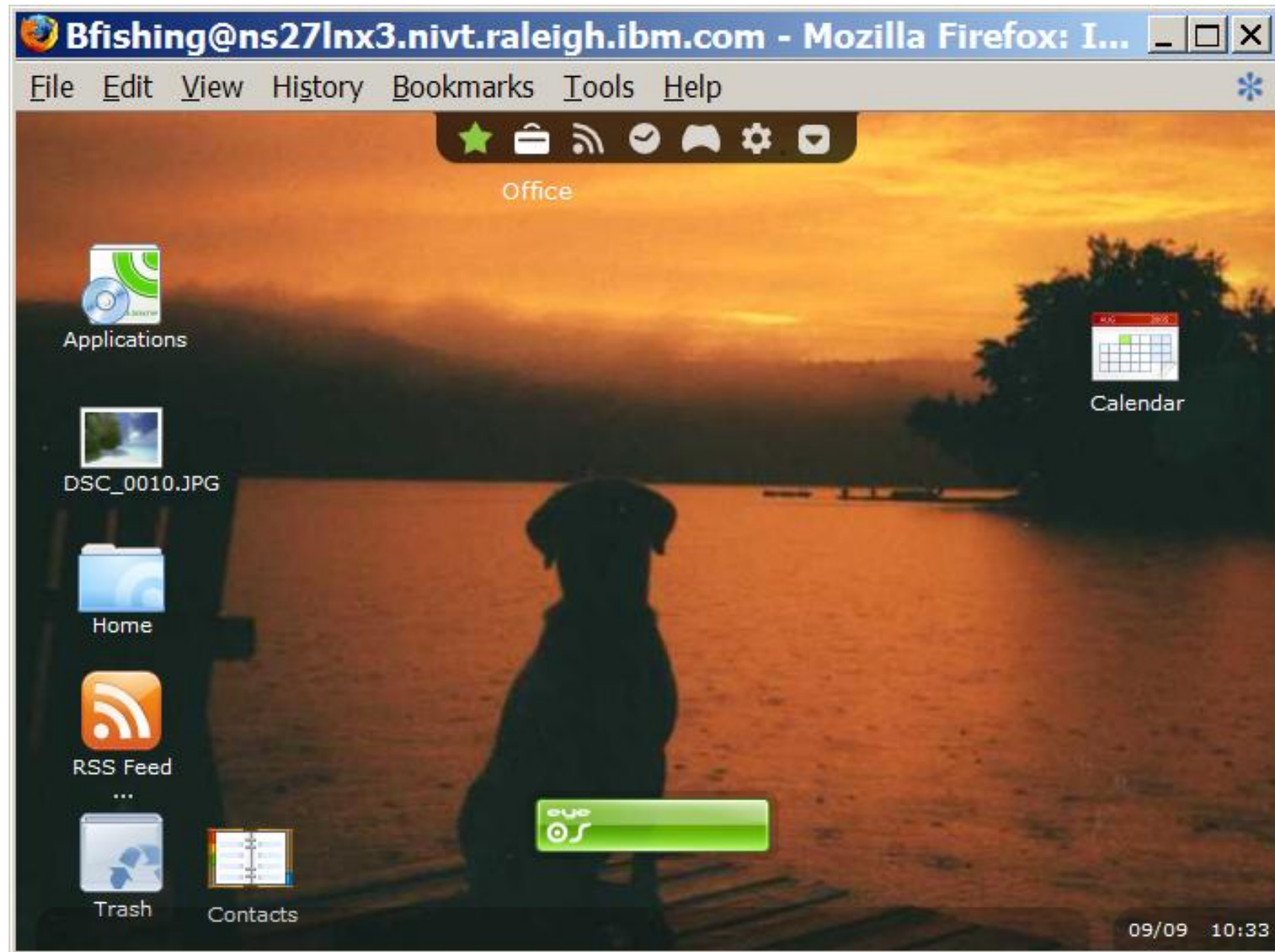
Retype pass

Language

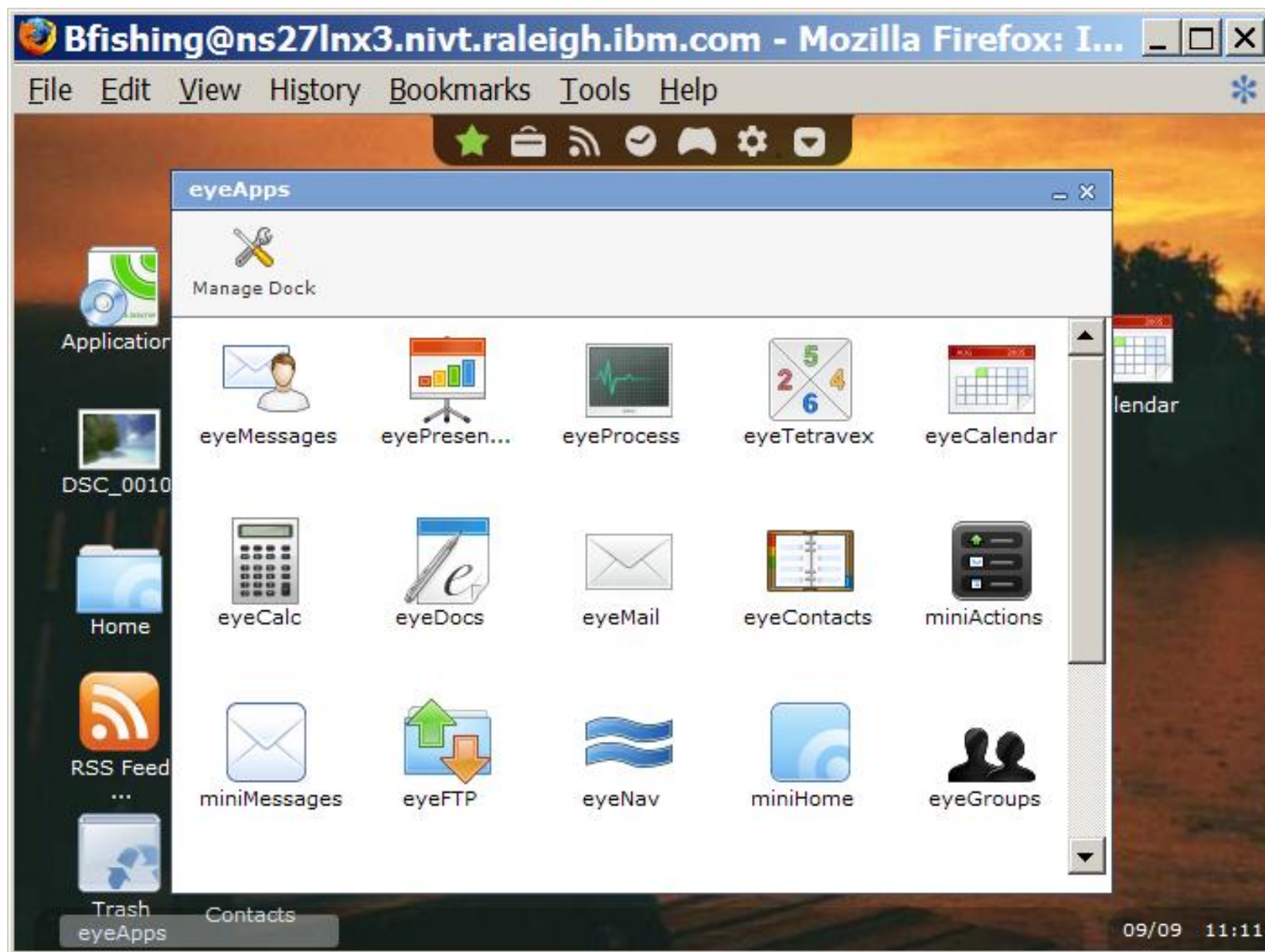
English

Powered by eyeOS

Customize it just like your home PC



And all your tools are here



IBM Director for Linux on System z V5.20

With z/VM Center and Software Distribution Premium Edition

IBM Director Base Functions

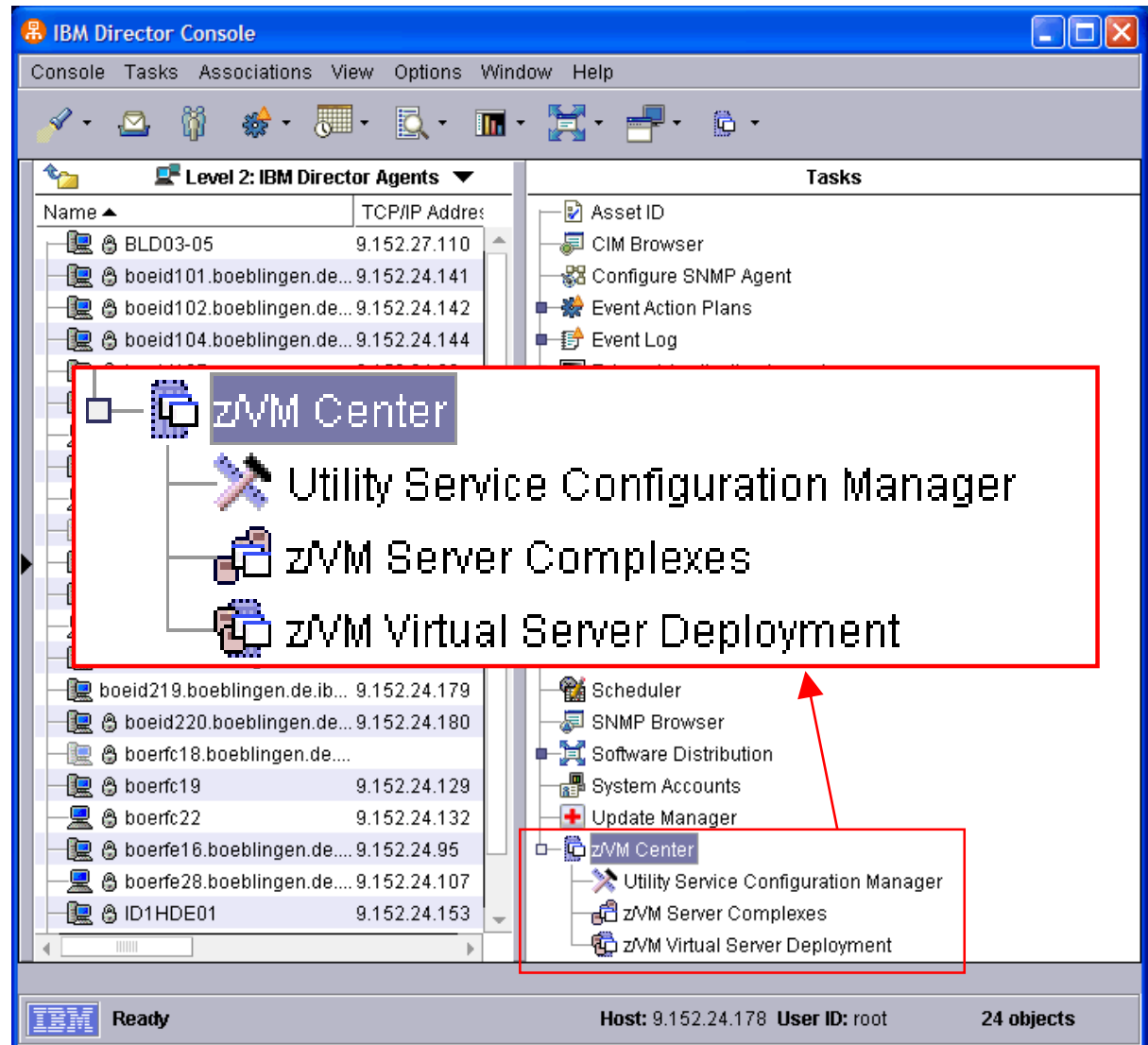
- Discovery
- Group Management
- Inventory
- Basic Resource Monitor
- Event Action Plan (EAP)
- Process Management
- Remote Session
- File Transfer
- Network Configuration
- Software Distribution
- SNMP Browser

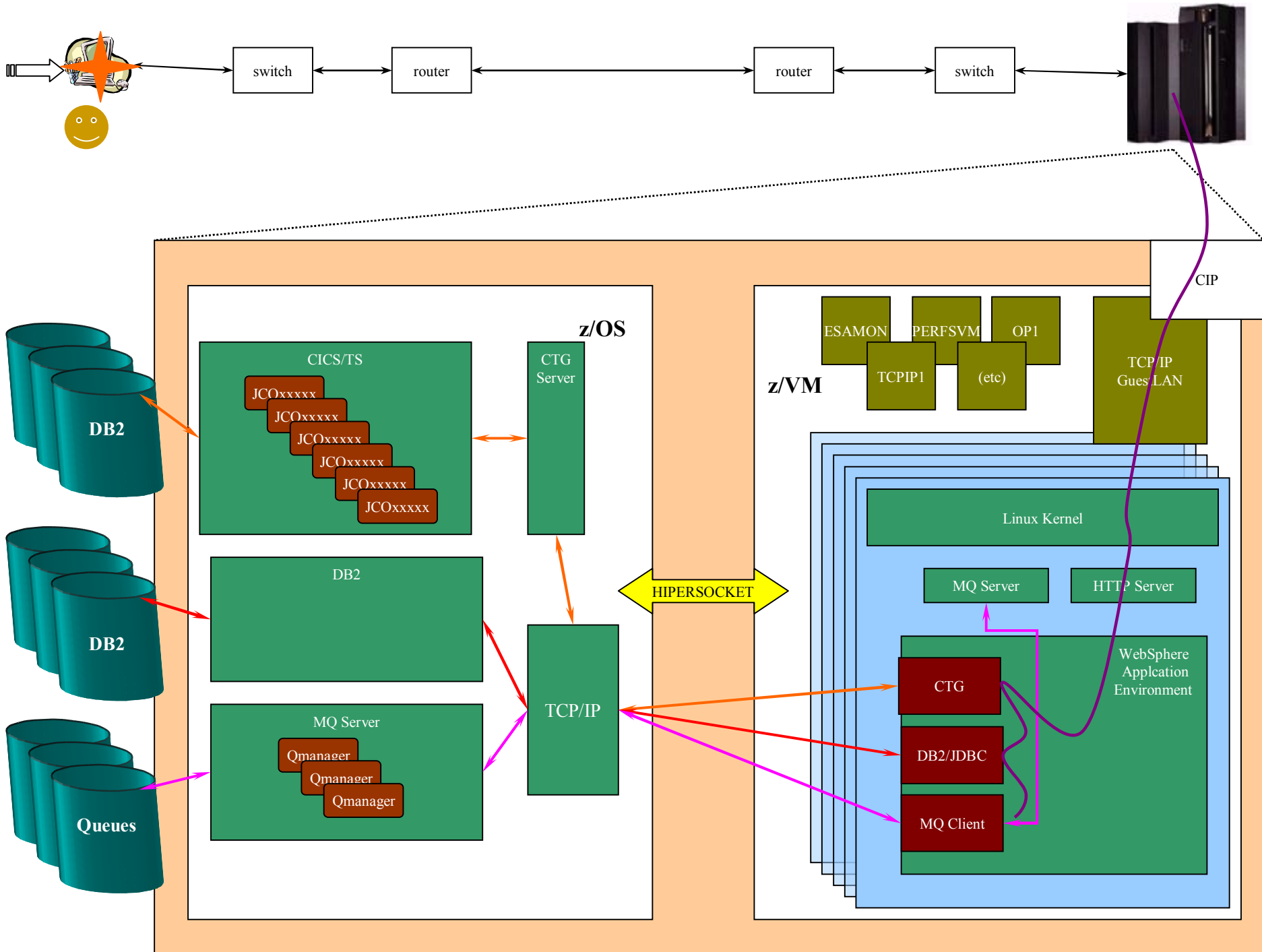
z/VM Center

- Utility Service Configuration Manager **New**
- z/VM Virtual Server Deployment
- z/VM Server Complexes

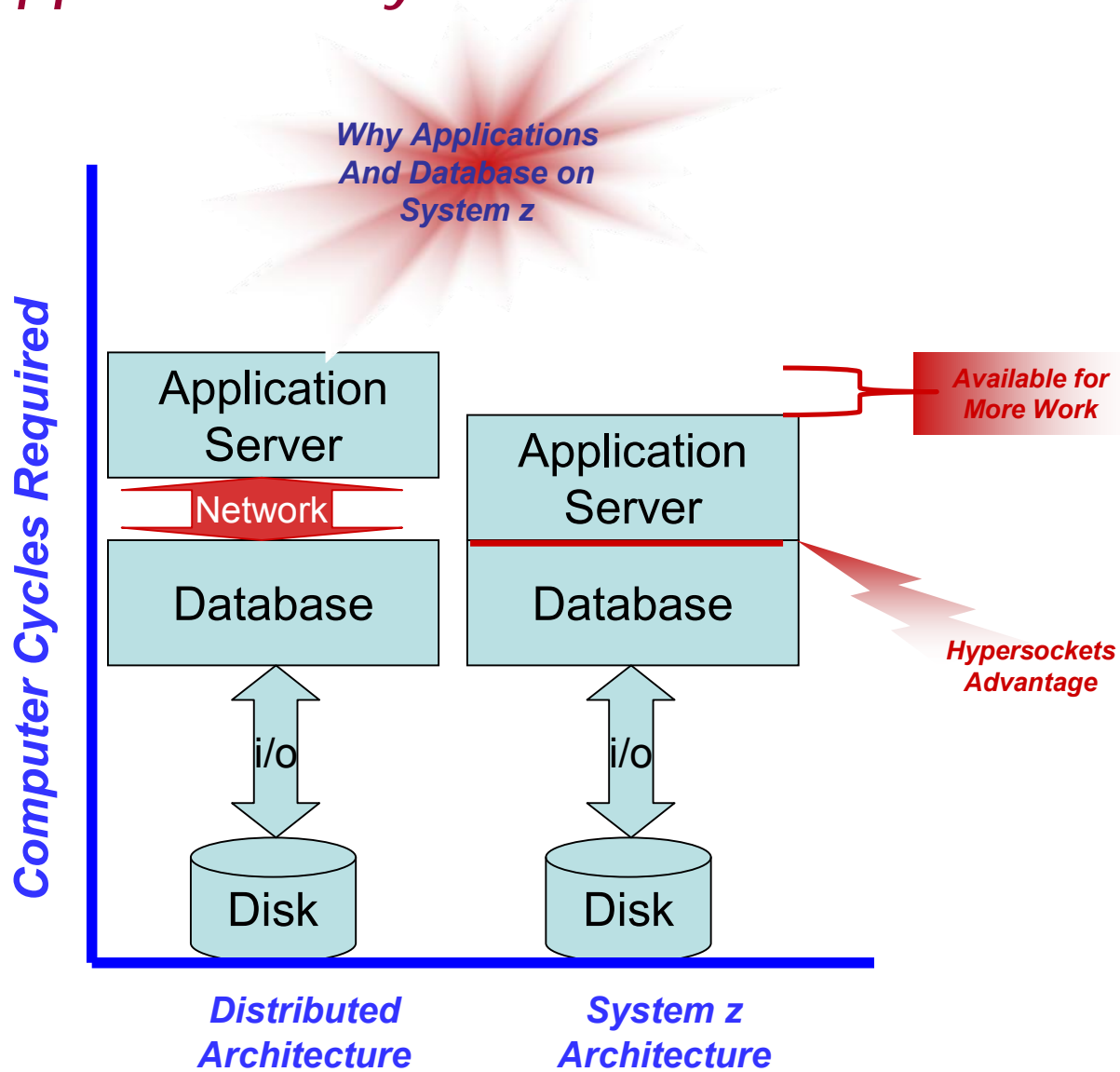
Software Distribution Premium Edition **New**

- Software package distribution





Application Layer Performance



ISV Application Server Options

ü Web Sphere

ü IBI Web Focus

ü SAP

ü INFORMS

ü Java

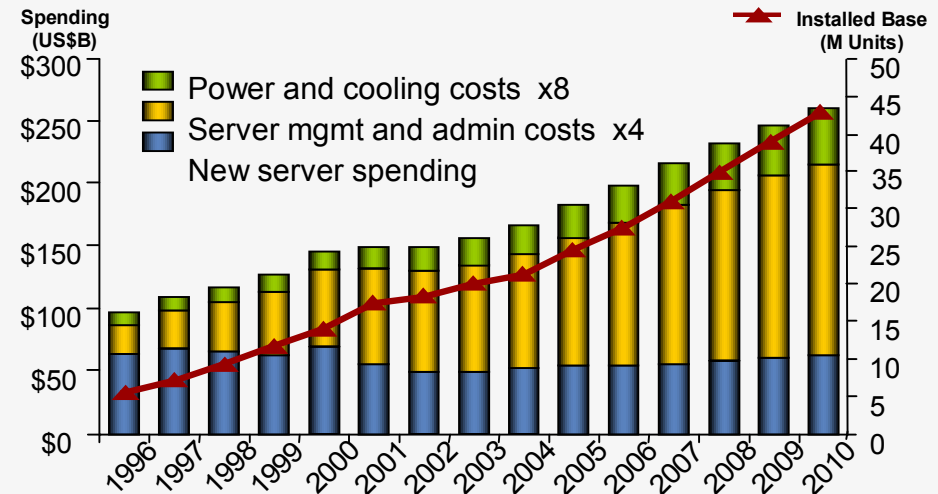
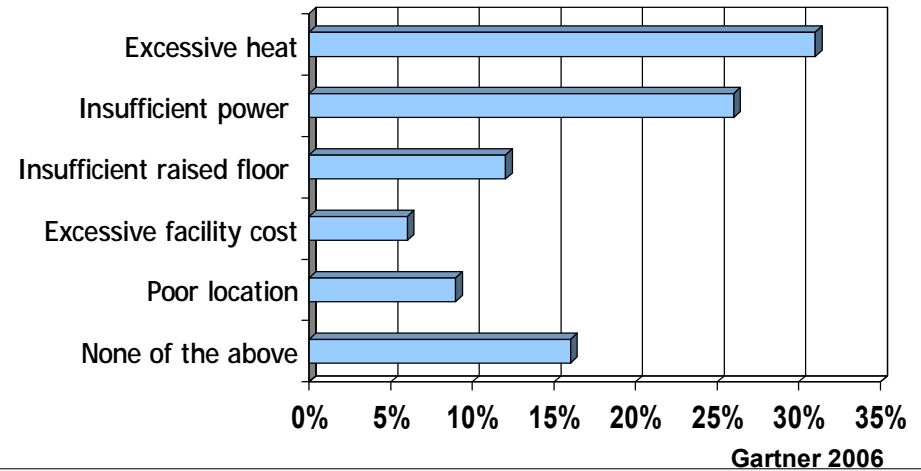
What is the greatest facility problem with your primary data center?

“Power and cooling will be a top 3 issue with all CIO’s in the next 6-12 months”

Michael Bell – Gartner Group

“Power and cooling costs will increase to more than one-third of the total IT budget”

Robert Frances Group, January 2006



Source: IDC, Virtualization 2.0: The Next Phase in Customer Adoption, Doc #204904, Dec 2006

IDC 2006

What Makes Best Fit

- § Leverage classic strengths of the System z
 - § High availability
 - § High i/o bandwidth capabilities
 - § Flexibility to run disparate workloads concurrently
 - § Requirement for excellent disaster recovery capabilities
 - § Security
- § Shortening end to end path length for applications
 - § Collocation of applications
 - § Consolidation of applications from distributed servers
 - § Reduction in network traffic
 - § Simplification of support model
- § Consolidation Effect
 - § Power requirements
 - § Software costs
 - § People Costs
 - § Real Estate
 - § Workloads requiring EXTREME Flexibility



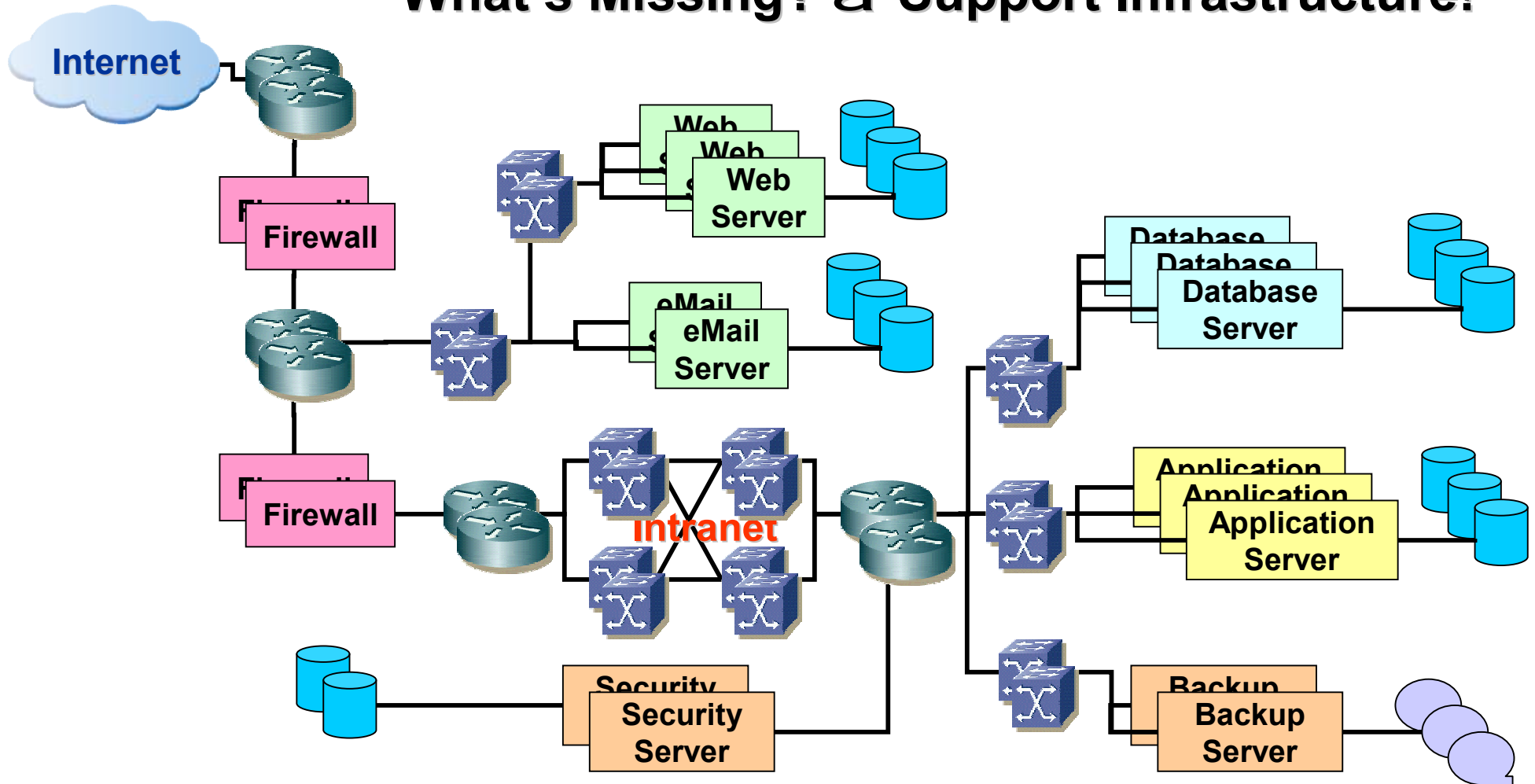
Best Fit Application Workloads



- § WebSphere MQ Series
- § DB2 Connect
- § CICS Transaction Gateway , IMS Connect for Java
- § SAP
- § WebSphere and JAVA applications development
- § WebSphere Application Server (WAS), Portal
- § Domino
- § Network Infrastructure, FTP, NFS, DNS etc.,
- § Oracle Database
- § Applications requiring top end disaster recovery model
- § ComServer and Communications Controller for Linux
- § Virtualization and Security Services
- § InfoSphere/Cognos
- § Communigate Pro (VoIP)

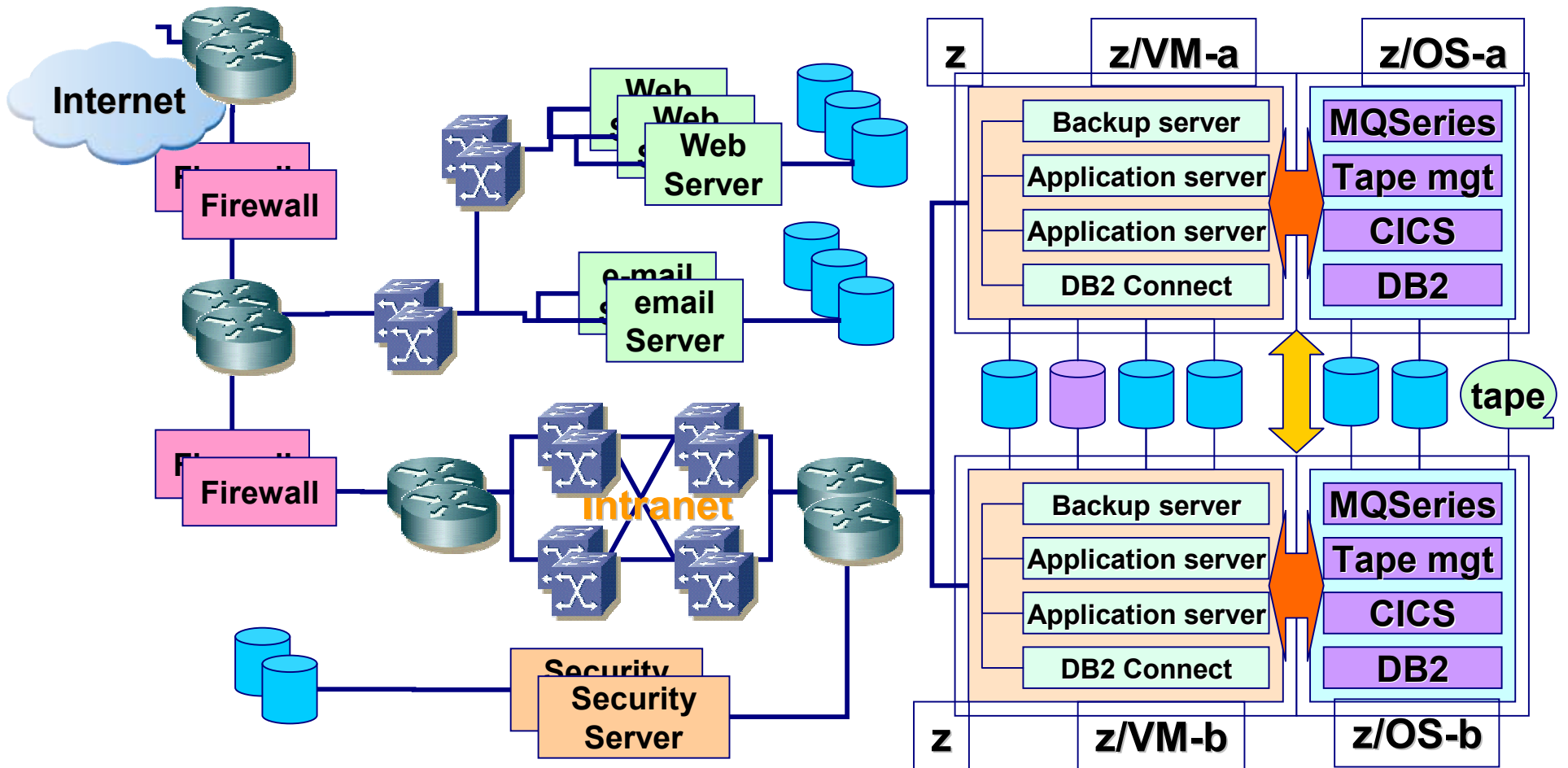
Infrastructure Reduction

What's Missing? à Support Infrastructure!



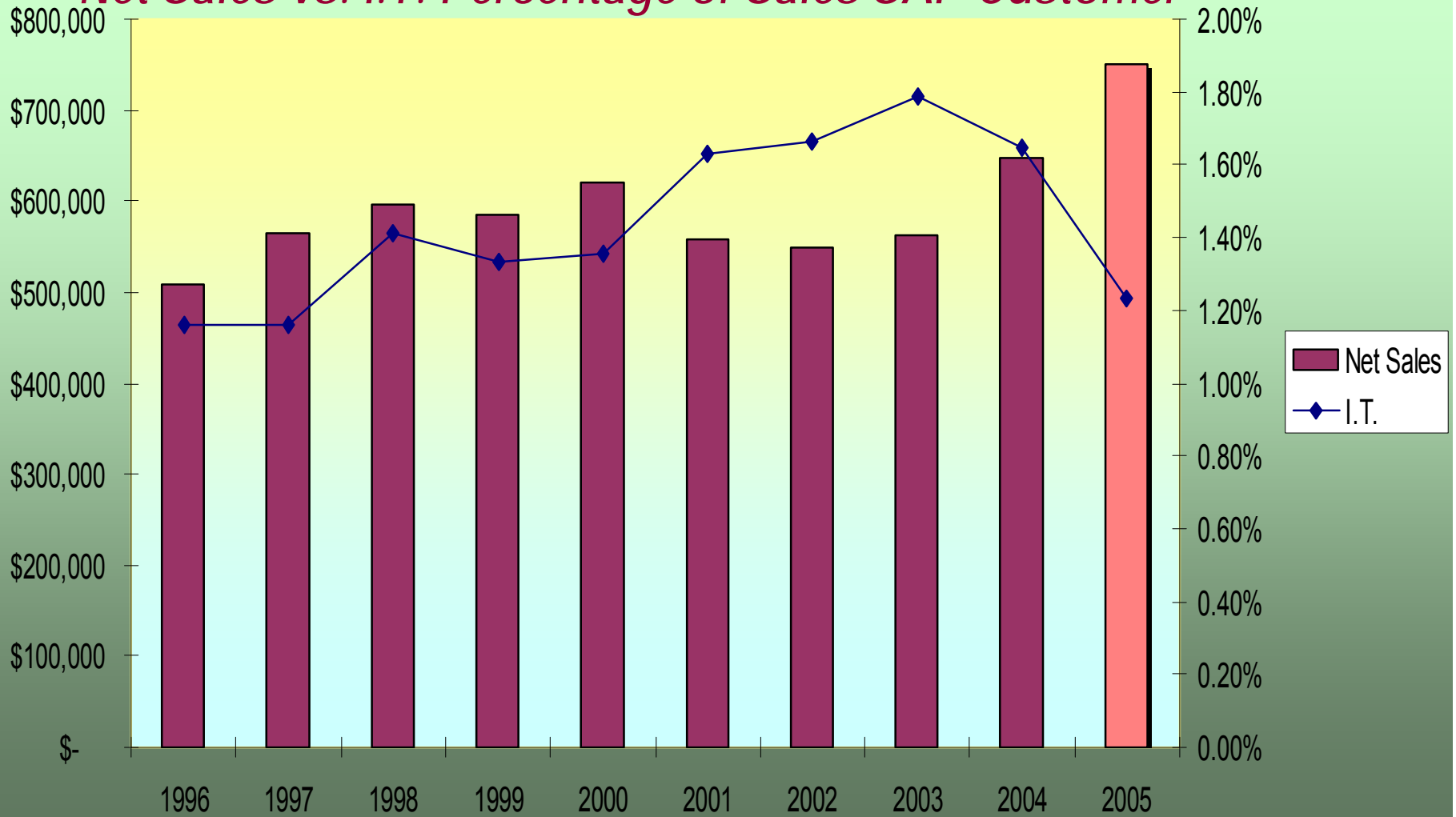
This configuration contains 50+ levels of infrastructure

Reduce Infrastructure with Linux on System z



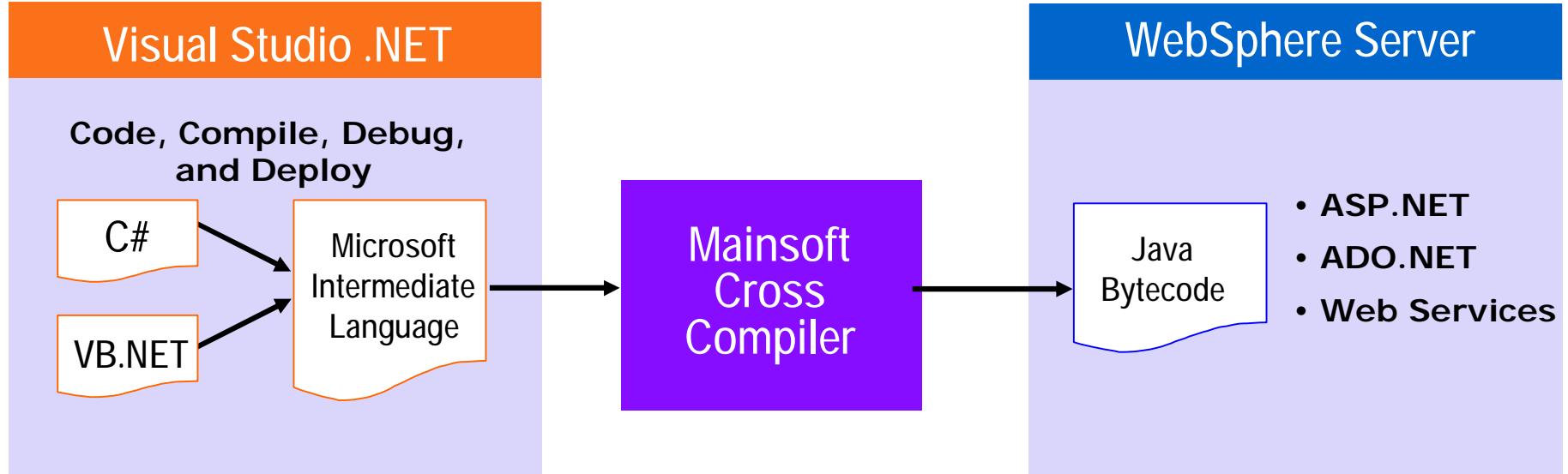
In this configuration, 14+ levels of infrastructure have been eliminated


Net Sales vs. I.T. Percentage of Sales SAP Customer



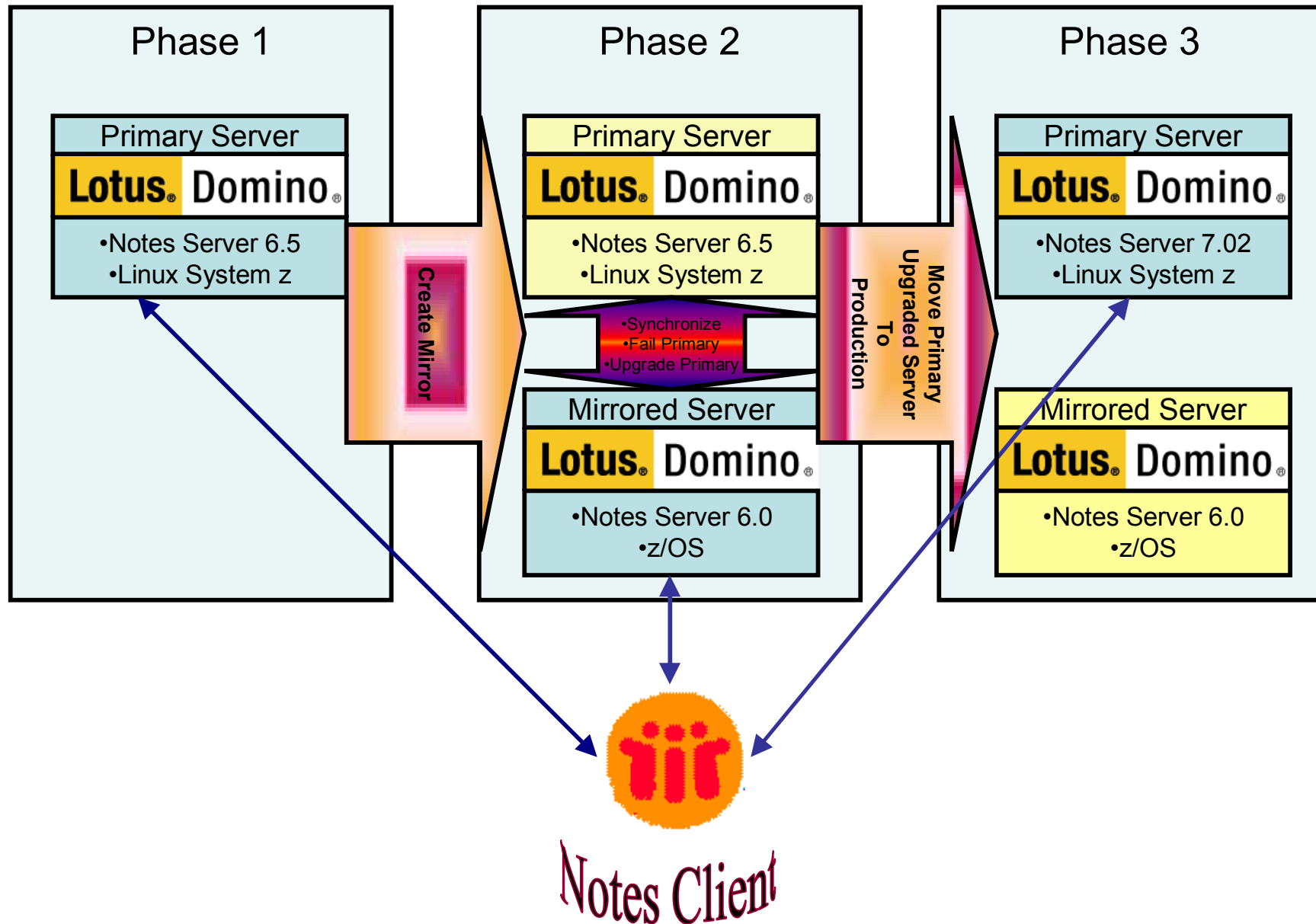
Enabling Technology

Visual MainWin for J2EE, Enterprise & Portal Editions

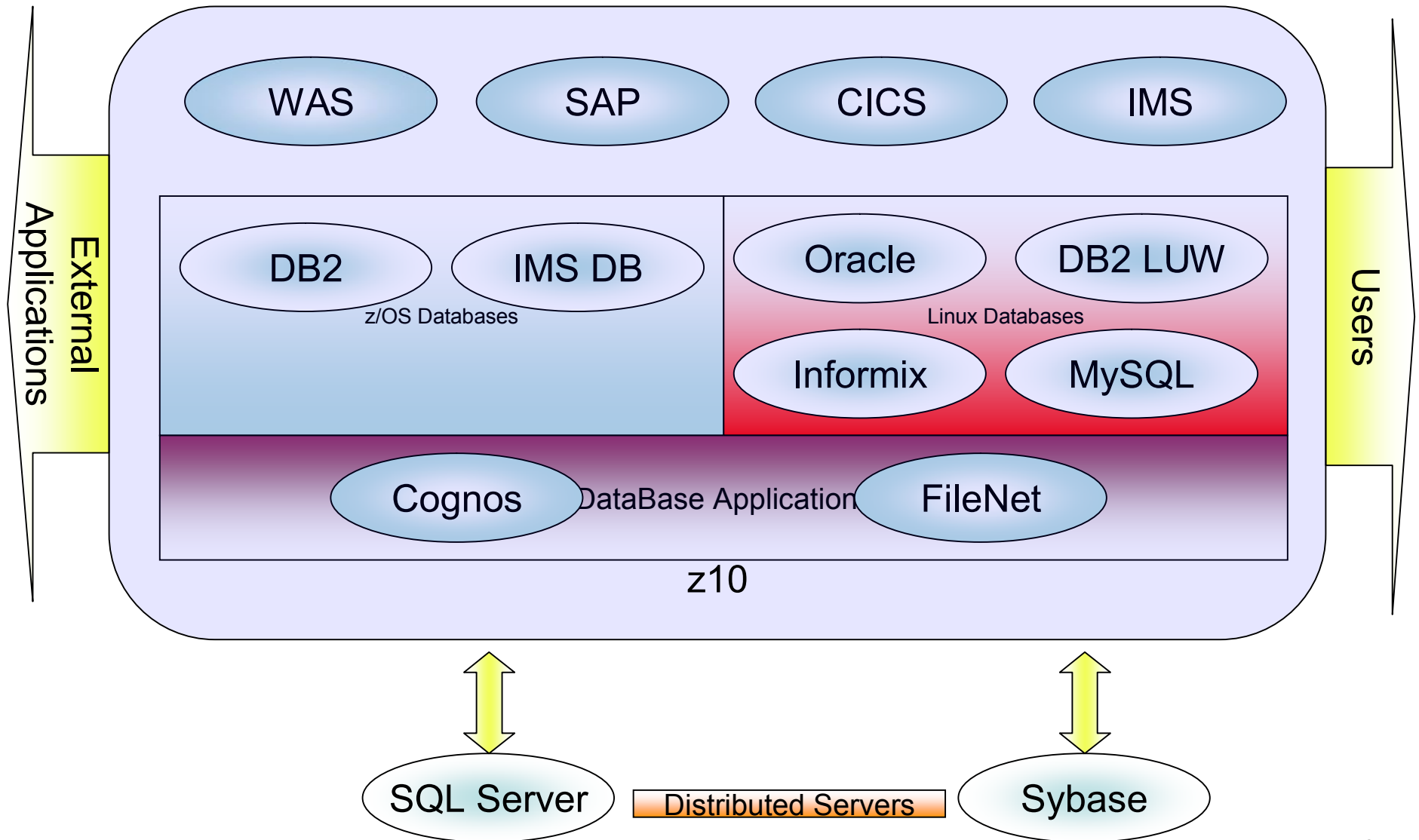


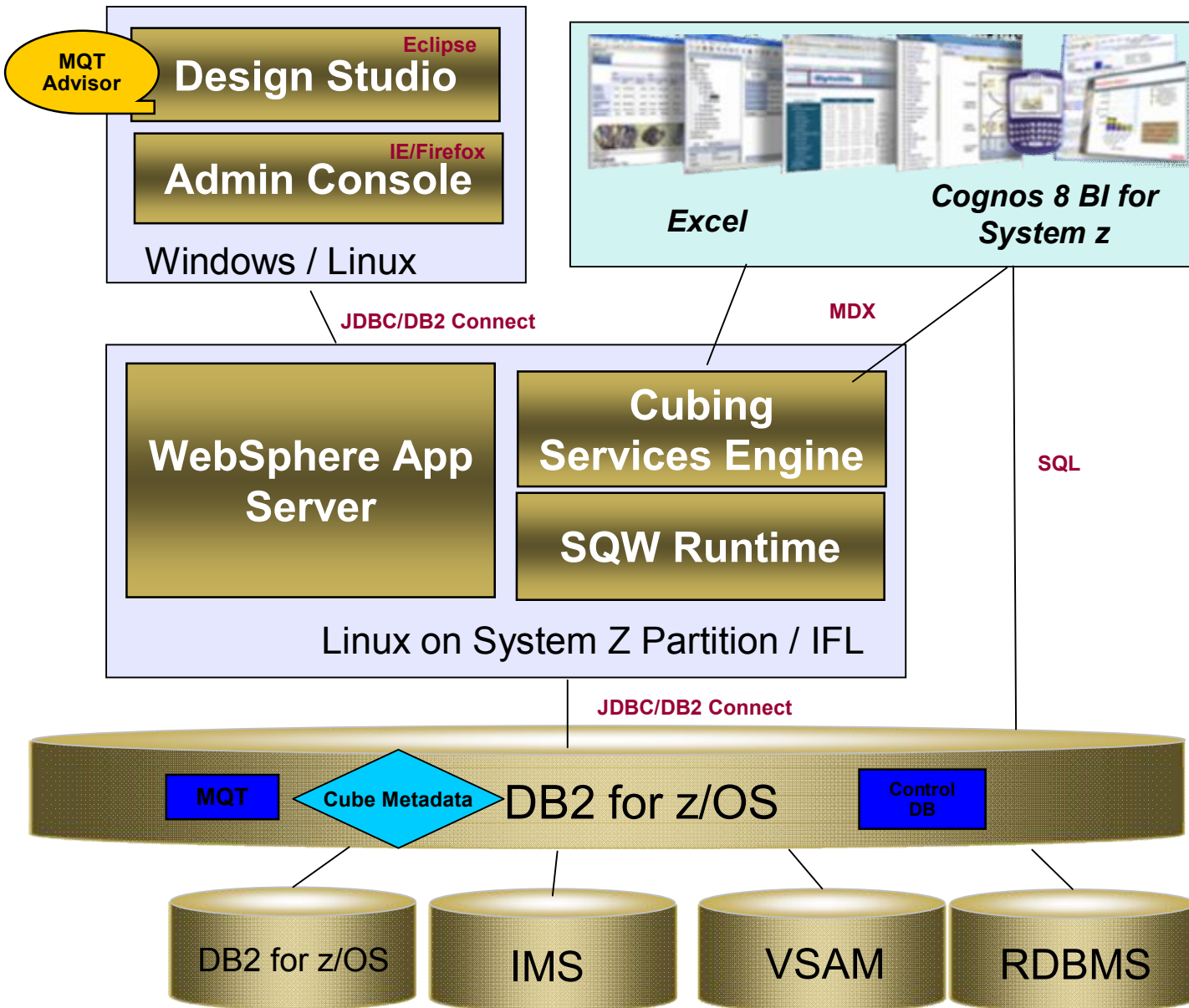
Mainsoft software has been validated  on System z & other eServer platforms.

Domino for Linux on System z, Imagine the Possibilities



System z THE Database and Warehouse Engine





Client Layer

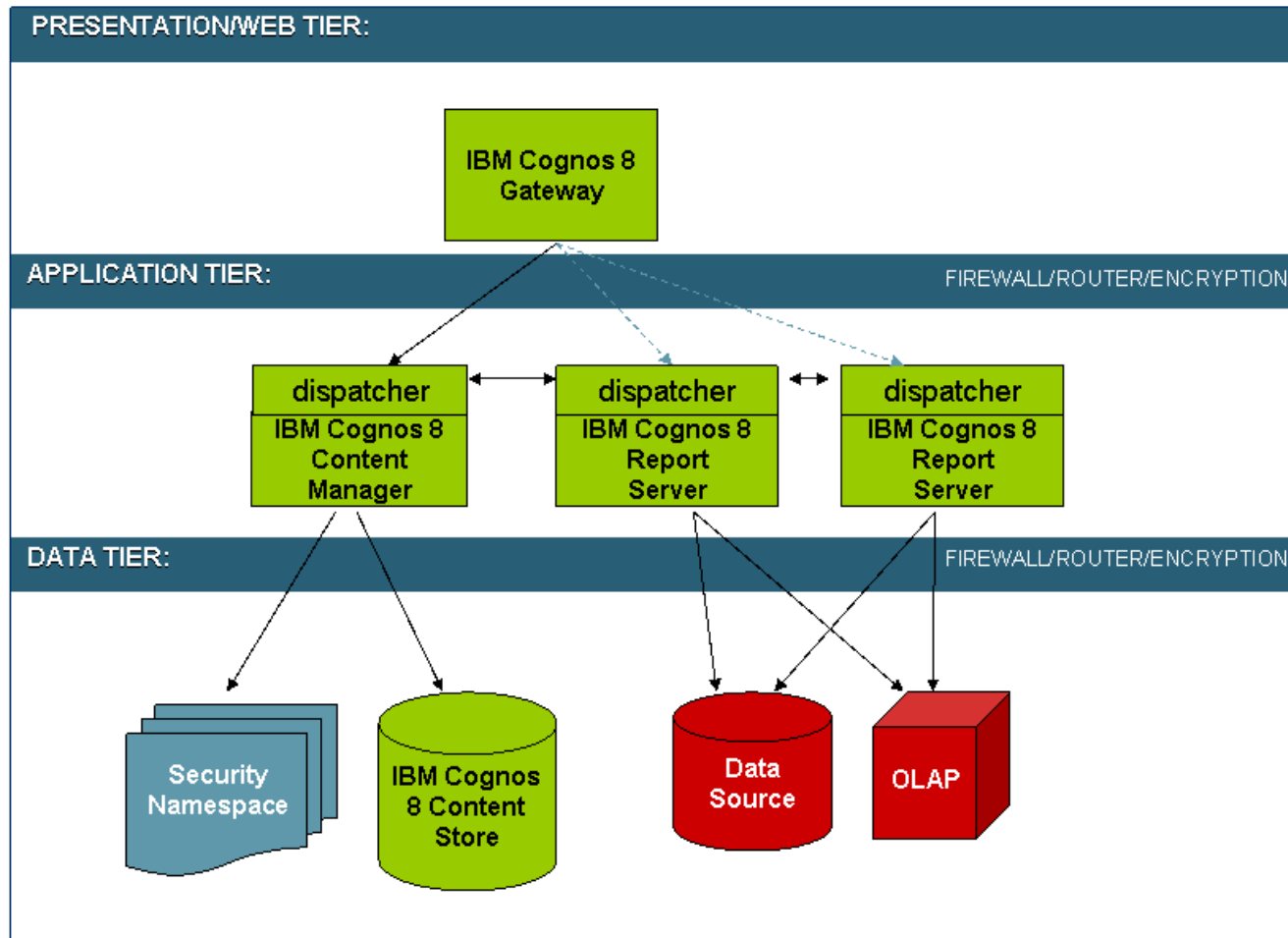
- Design and admin client
- BI / Reporting tools and apps

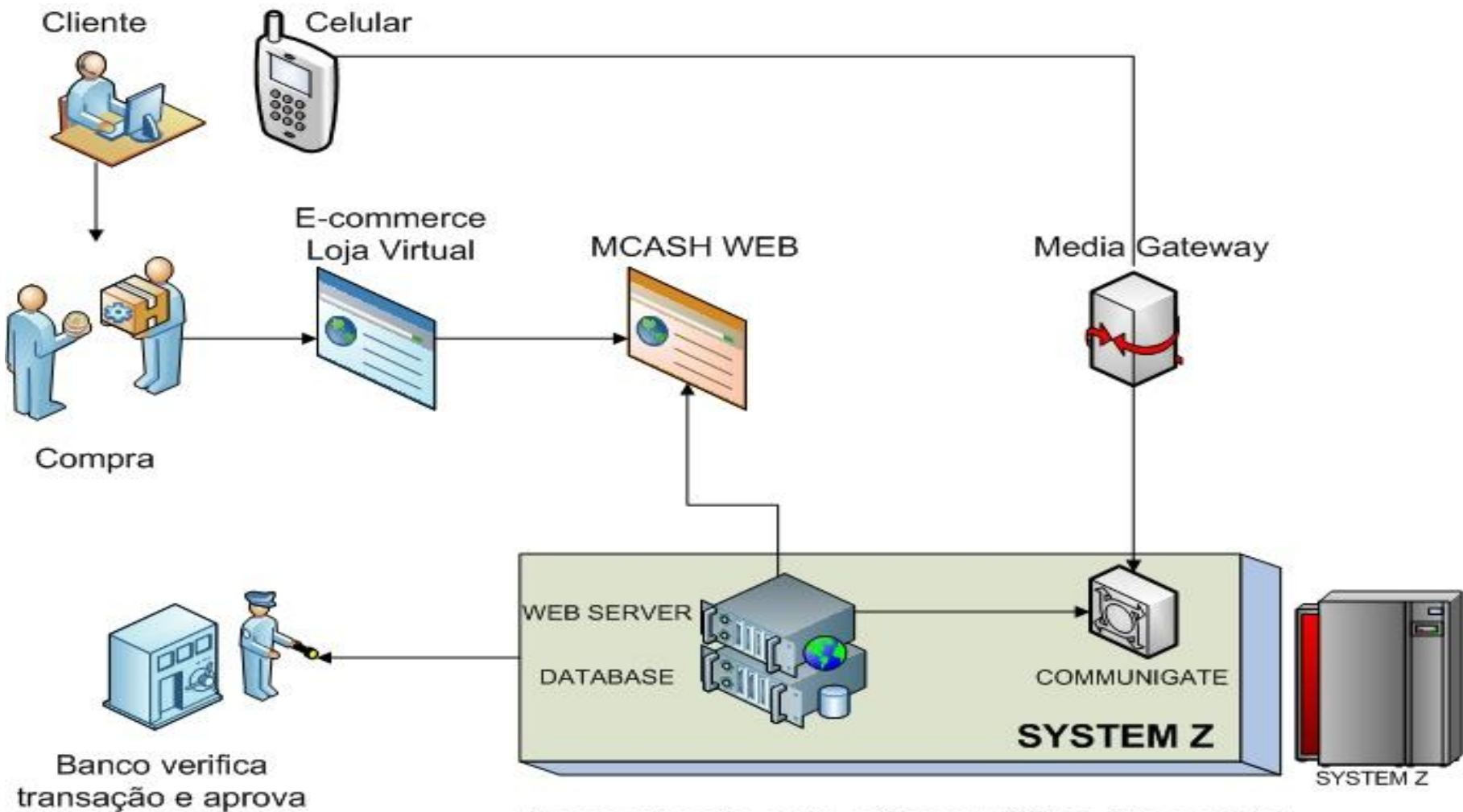
Application Server

Data Warehouse Server

Source Systems

IBM Cognos 8 BI Architecture





A comunicação entre o CommuniGate Pro e o Web Server da Mcash é feita por meio de socket seguro (SSH Tunnel) com o envio e recebimento de informações programado em API do CommuniGate Pro disponível para Java, Perl ou PHP.

What Makes Good Fit

- § Evaluate server choices
 - § Correct application availability,
 - § Supporting applications,
 - § Total Cost of Ownership (TCO)
 - § **Politics** within the organization.
 - § Porting issues
- § Shortening end to end path length for applications
 - § Collocation of applications
 - § Consolidation of applications from distributed servers
 - § Reduction in network traffic
 - § Simplification of support model

- Consolidation Effect
 - Power requirements
 - Software costs
 - People Costs
 - Real Estate
 - Workloads requiring EXTREME flexibility



Good Fit Application Workloads



- § UDB (DB2)
- § Informix, (IDS)
- § Apache web serving
- § SAMBA
- § TIM/TAM (LDAP Services)
- § TSM
- § Existing Linux Workloads



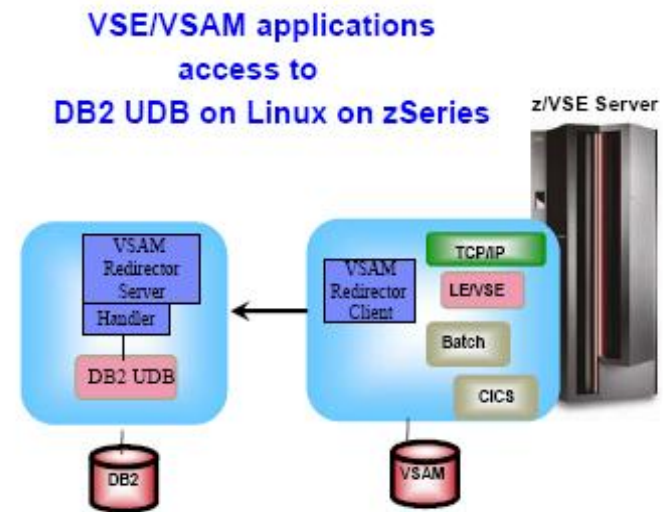
DB2, Imagine the Possibilities on Linux for System z

UDB 8.1

UDB V8.2

DB2 V9.1 Native XML

- Spatial Extenders
- Archive Expert
- Test Database Generator
- Net Search Extender



Potentially Difficult Candidates

- § ISV and IBM applications that have not yet ported their application to run on Linux on System z
- § Applications that by design run at VERY High sustained utilization which I will define here as >95%.
- § Stand-Alone single applications as the only Linux for System z applications
- § Applications that are to internally sensitive to try and move
<http://www-1.ibm.com/servers/eserver/zseries/os/linux/apps/all.html>
- § This URL is a link to the IBM software running and supported to run under Linux on System z.
<http://www-1.ibm.com/servers/eserver/zseries/os/linux/software.html>
- § Call and ask if the software is not on one of the two lists above. Call Jeff Noel (POK), Ray Smith (POK), or Bill Reeder (Seattle).



System z ISV Ecosystem as of 1Q 2009

Ø Over 6,000 applications, from over 1,600 ISVs enabled on the System z platform

✓ Over 2,000 applications on z/OS 1.8 and above

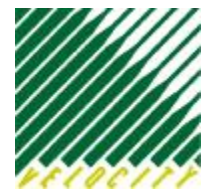
ü More than 3,800 for all z/OS releases

✓ Over 2,900 applications on Linux on z

ü More than 500 new Linux applications added in 2008

Ø Represents 18% growth from 2007

ü Over 150 already added in 2009



IBM Multi-Architecture Virtualization Federated Hypervisor Support with System z Enabling "Fit for Purpose" Application Hosting

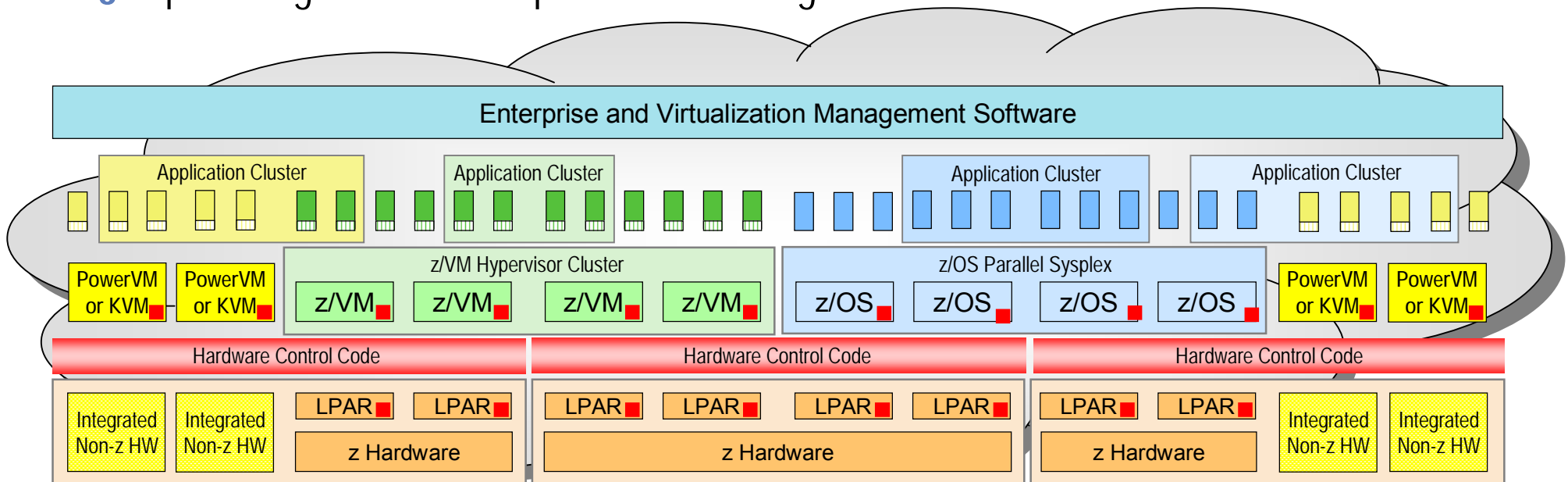
§ System z futures: hosting a federation of platform management functions, including:

- Resource monitoring
- Workload management
- Availability management
- Image management
- Energy management

§ Integrates with hardware management and virtualization functions

§ Controls hypervisors and management agents on blades

§ Open integration to enterprise-level management software



■ = Code that interfaces with hardware control code

RED HAT :: CHICAGO :: 2009

SUMMIT

**JBoss
WORLD**
CHICAGO 2009

CHICAGO SEPTEMBER 1-4, 2009

LEARN. NETWORK. EXPERIENCE OPEN SOURCE.

The Red Hat Summit and JBoss World are for anyone interested in Red Hat and open source solutions. Meet, network with, and learn from Red Hat and JBoss developers and executives as well as your peers in the industry. Attend sessions, workshops, and hands-on labs in multiple tracks to find new ways to improve your business, and hear from Red Hat about the technology you'll have tomorrow.

TWO EVENTS. ONE PASS. MORE VALUE.

For the first time, we'll be hosting the Summit and JBoss World together. No matter which event you choose to register for, whether it is the Red Hat Summit or JBoss World, your conference pass will allow you to access anything and everything included in both events, such as sessions, keynotes, exhibitors and parties. Tracks for both events include: Carving out Costs, Open Source for IT Leaders, Decoding the Code, What's Next and What's New.

REGISTER NOW ▶ redhat.com/summit ▶ jbossworld.com

Presented by



Questions ????

