



# Challenging the world to change





# Agenda

- What is the SuSE Universal OS vision
- Why SuSE
- Autobuild and other things that make SuSE the best for IT
- SUSE products
- Partnerships and alliances



# Who is SuSE?

- **Statistics**

- **Founded 1992**
- **Started Selling Linux in 1993**
- **Growing Customer Base**
- **350+ Employees, \$40M in Revenues**

- **Market Focus**

- **Universal OS**
- **Enterprise Customers**
- **OS Software Integration**

- **Global Operations**

- **World Class Linux Dev Team**
- **Germany- World Head Quarters**
- **Offices: US, UK, Italy, Czech Republic**
- **Latin America**

## **Improving the Bottom Line**

Lowering the overall cost of operations

Consolidating IT Resources

# OS Market Data

- Europe's best selling Linux
- SuSE is growing aggressively in the US market
- SuSE is ranked #2 in the x86 arena with ~20% Market Share
- SuSE is the undisputed leader in 64-bit Linux
- SuSE dominates the non x86 Enterprise Linux markets and claims more than 50% of the i/pSeries and greater 80% of the Linux for S/390 and zSeries markets (WW)

*"In every category, SuSE either held first place or tied Red Hat for that position"*

DH Brown, Linux Function Review, 2003

# What makes SUSE Unique?

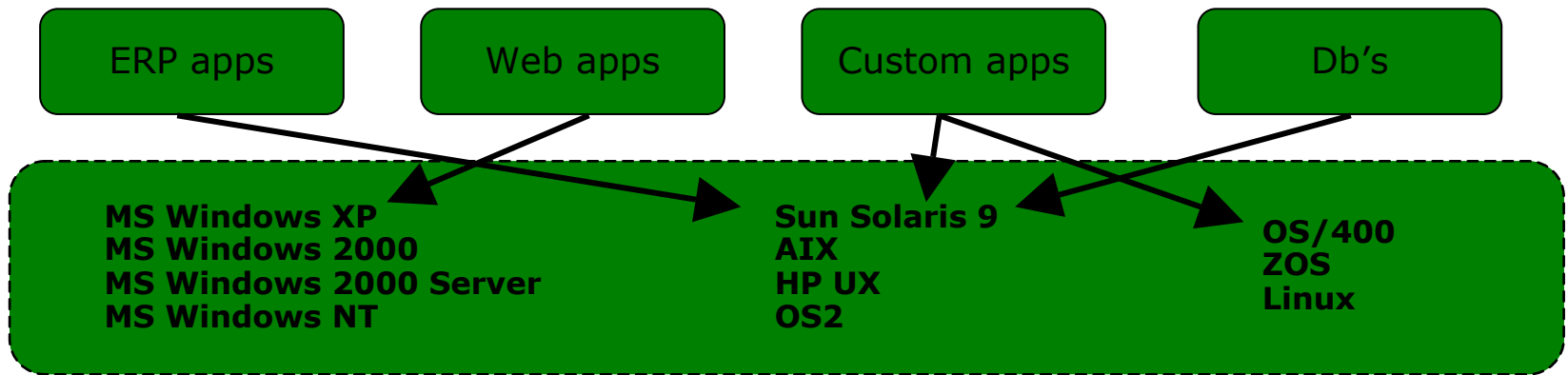
- Pure focus on Enterprise Linux
  - SUSE maintains a dialoge with business Linux users -- technical and executives
  - We design SUSE Linux for the mainframe, and let the quality echo through all platforms
- The Universal OS
  - One source, multiple platforms
  - Been doing this for several years (unlike some newbies)
- Building the best Linux ecosystem available for business
  - Choosing strategic partners to deliver a complete Linux solution for businesses
  - Hence, CA and SUSE partnering

*Would you rather drive a Mercedes or a Yugo?*



# SuSE Vision

## The Enterprise Today (sadly)...



Desktop

Main Frame



OS's



# SuSE Vision

Plug and Play Enterprise Systems...

ERP apps

Web apps

Custom apps

Db's

SuSE Linux  
Desktop / Enterprise Server

Universal OS<sup>©</sup>



Compaq  
**DeskTop**

Dell

SUN

HP

IBM  
**Main Frame**

# What is AutoBuild?

- AutoBuild is unique to SUSE
  - A system for automating the SUSE Linux build process
  - Uses one source code base for all platforms
  - Builds and tests each platform
  - Test the interoperability of each platform
  - Assures that all SUSE Linux products work together perfectly
- Why is this important? A Universal OS . . .
  - Reduces production problems
  - Improves operations
  - Consolidates skill sets
  - Expidites IT solutions





# Build Process

Linux Community Code

SuSE Code Base



**SuSE Linux Enterprise Server Product Line (SLES)**

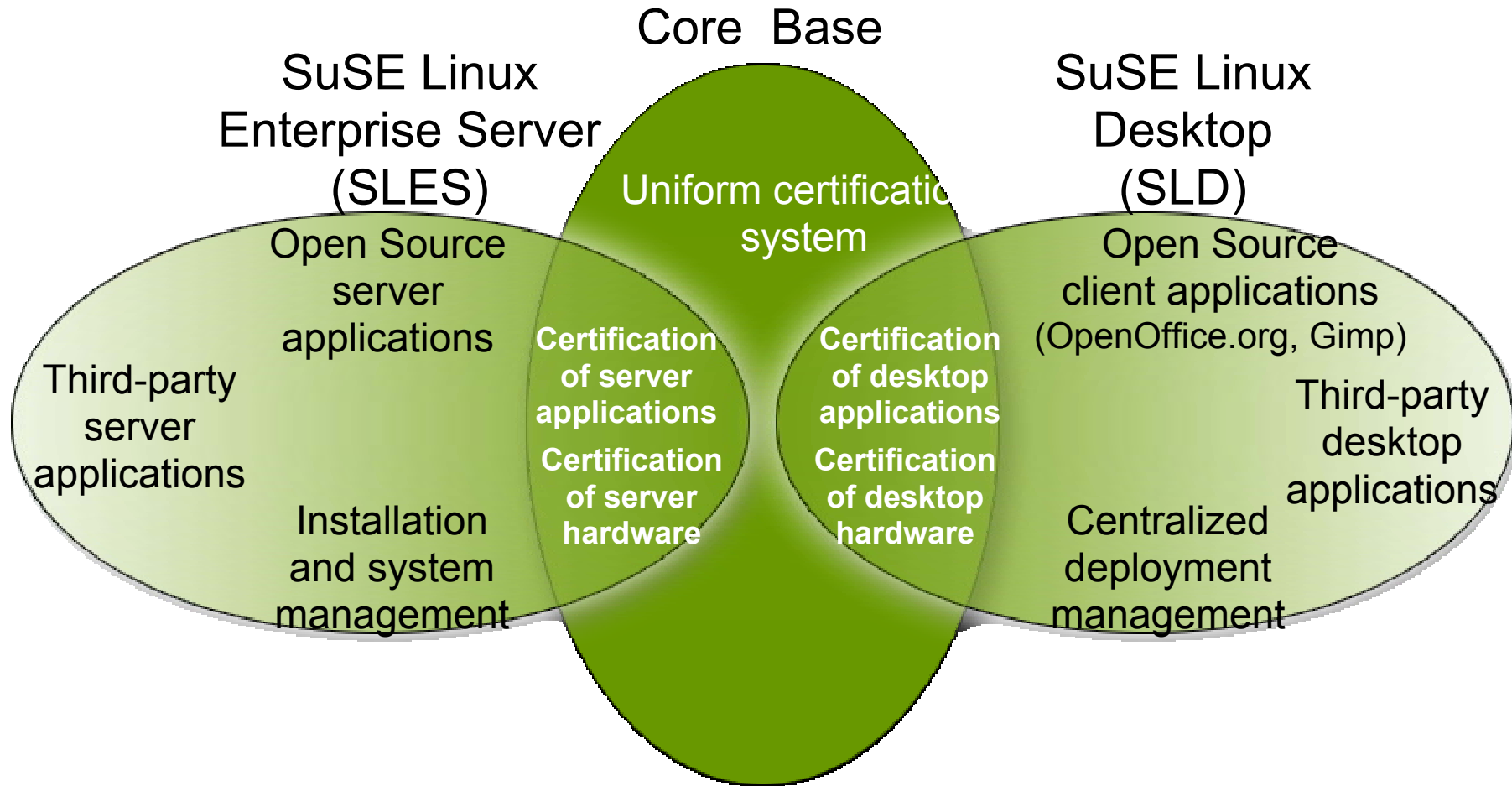


**SuSE Linux Desktop (SLD)**

Long Term Maintenance (Bugfixes, Updates, Releases)

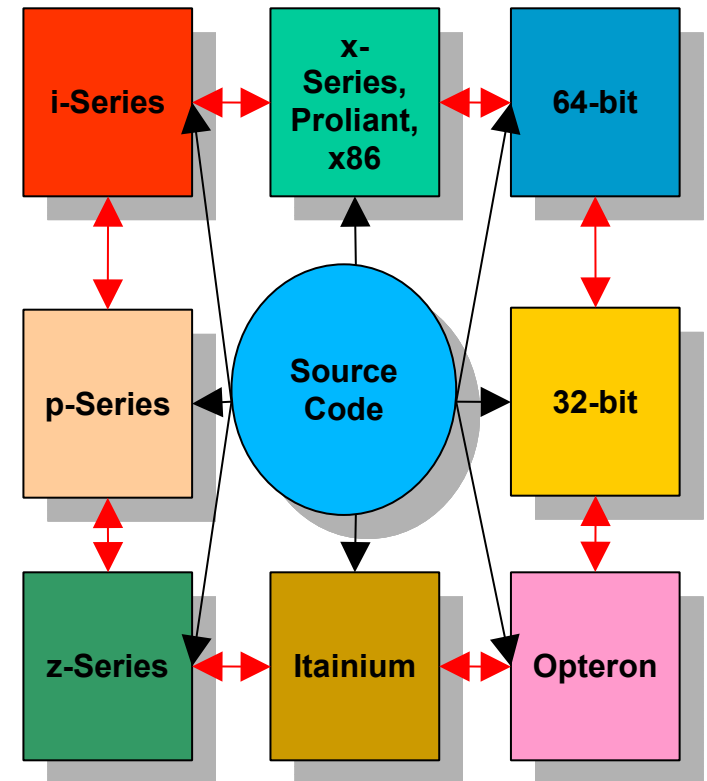


# Desktop and Server



# SuSE's Autobuild System

- One source, one build, many platforms
  - Our AutoBuild system creates a completely cross-compatible SuSE Linux for all platforms
- Absolute cross-platform interoperability
  - Single-source assures that laptops, clusters, minis and mainframes work in the same way
- Highest available degree of application portability
  - SW vendors now have many more profit centers (platforms) to which they can easily port
  - Peripheral vendors have more platform opportunities
- Mainframe-grade stability on all platforms
  - SuSE Linux builds to support five-nines (99.999%) stability for mainframe users
  - That stability is replicated for all other platforms



*Businesses trust SuSE engineering to provide a proven, rock-solid Linux environment across all platforms.*

# YaST – Administration made easy

- YaST is the central program for all Sys Admin functions
- Consistent, complete, and simple to use
- Reduces administrative errors
- AutoYaST for mass installation



# SuSE Linux for the Enterprise

Lower entry cost / desktop

Performance, stability, support, maintenance





# SUSE Linux Stability

- Stability and support
  - Mainframe quality echoes through all platforms
  - YaST reduces downtime – planned and unplanned
  - YaST Online Update streamlines patching
  - AutoYaST for networked administration
  - Robust journaling file systems

# SUSE Linux Support

- Support for SuSE Linux
  - Available from SuSE
    - Maintenance – patches, email support, installation support
    - Standard support – Business hours phone, config support
    - Premium support – 24X7 phone, standard plus high availability
  - From IBM, HP, Sun and Oracle
    - “One throat to choke”



i n v e n t



We're the dot in .com™



ORACLE

# SUSE Linux Enterprise Server

- **Enterprise Server**
  - *For x86, Itanium, Opteron, i-Series, p-Series and z-Series*
  - *Scalable vertically and horizontally*
  - *Mainframe-grade stability on all platforms*
- **Unique features**
  - *YaST, for easy and bullet-proof administration*
  - *AutoUpdate for automated patch identification, downloading and installation*
- **Massively scalable**
  - *32- or 64-bit*
  - *Up to 64 processors*
  - *Up to 512 GB of memory*
  - *Up to 600 physical disc drives*
  - *Multipath and asynchronous I/O*





# SUSE Linux Openexchange

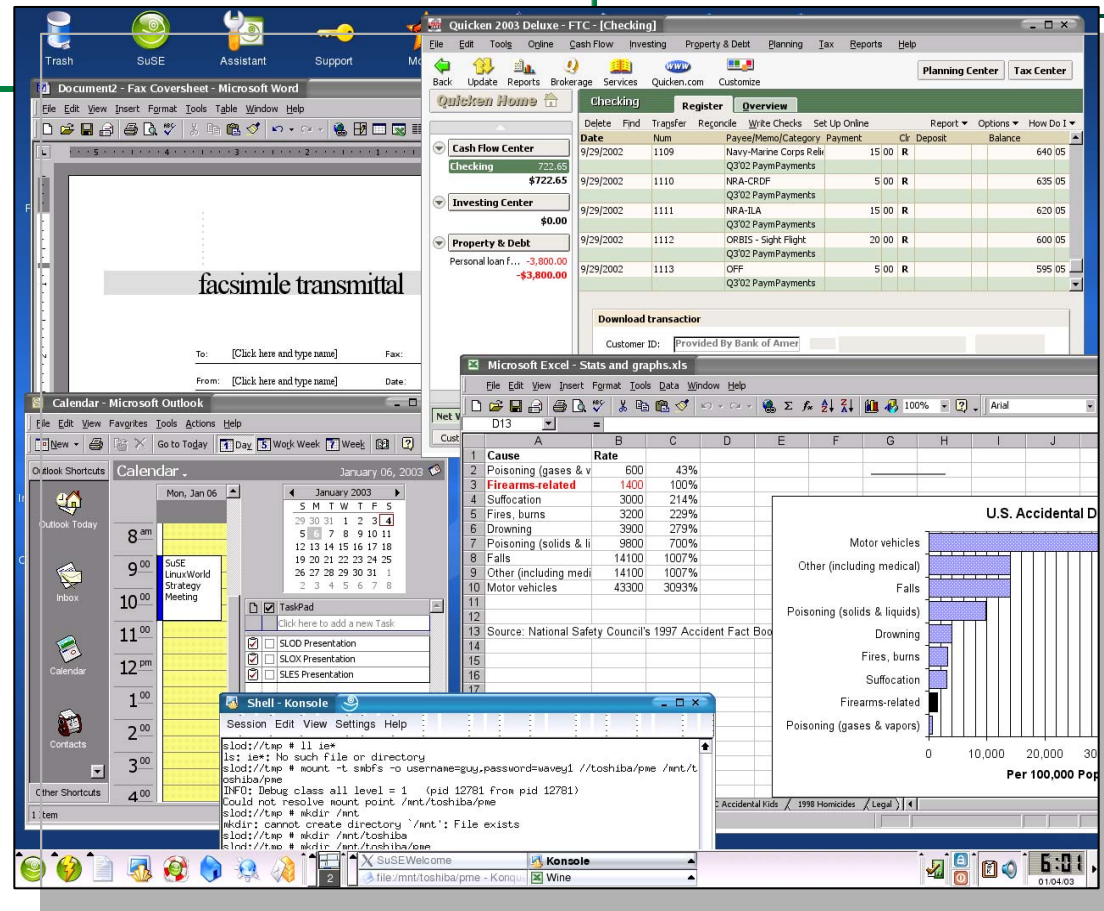
- Linux-based groupware
  - Based on OpenSource
  - Extremely scalable – 800+ users on a standard Intel box
- Features include
  - Email support
  - Calendars
  - Address books
  - Project management
  - Knowledge base
  - Document management
  - Forums
- All end-user and admin functions accessible via a web browser
- Up to 1/4 the cost of a Microsoft Exchange server



# SuSE Linux Desktop

1

- Support for Windows apps
- StarOffice suite for desktop applications
- Agfa Monotype fonts with Windows/Office compatibility
- Desktop sharing for support and collaboration
- Multi-level distributed administration
- SuSE Linux code-base stability



*"I've even chosen SuSE for my desktop and canned Microsoft!"*

Joe Poole - Mgr of Tech Support, Boscov's Department Stores

*SuSE Linux Desktop provides full office desktop functionality on the mainframe-grade SuSE Linux platform.*



sgi

# Why SUSE Linux?

- Maturity of a decade old technology company
- The stability of elegant engineering
- Our focused attention on making IT successful
- The backing of major HW and SW vendors



# *Mainframe Pilot Program*

- 600 USD for up to 6 months of maintenance
- Form available at [www.suse.com/us/business/products/server/sles/evaluation.html](http://www.suse.com/us/business/products/server/sles/evaluation.html)
- Or talk with a SUSE LINUX Premium Business Partner
  - IBM Global Services
  - Denver Solution Group
  - Mainline Information Systems



# Questions?

